

GIE PIC K150 Programmer

User Manual



Content

Overview	3
Supported IC	3
Installation.....	5
Install PL-2303 Driver (USB to Serial port).....	5
Setup For Programming Software	6
Operation of the Programming Software.....	8
Precaution	8
FAQ.....	8
Kit Contents	10
Warranty	10

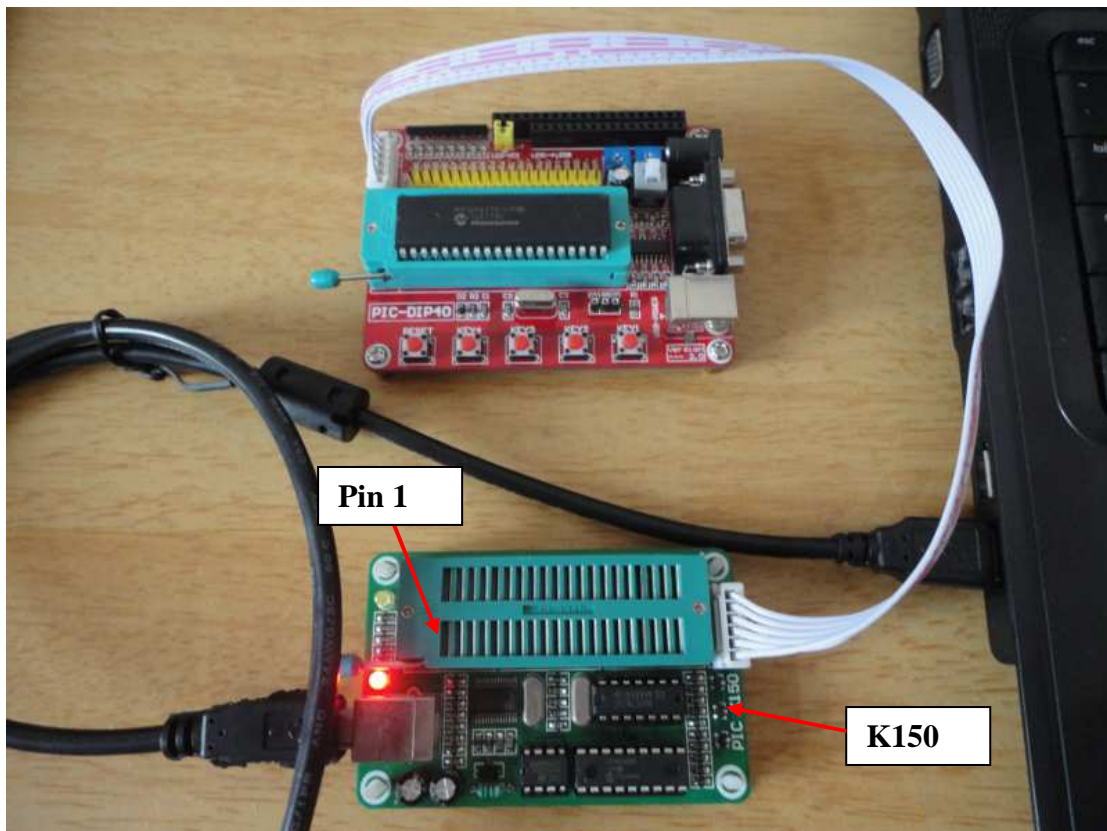
PIC K150 Programmer

1. Overview

K150 is a low-cost high-performance PIC programmer supports most popular PIC chip burning(write), read, encryption and other functions, its using high-speed USB communication mode, so that the programming speed is fast, stable and reliable. (average speed is higher than PICSTART + for about 3-5 times).

It equipped with a 40pins ZIF socket, can be directly programmed the 8pin-40pin DIP package PIC IC; for more than 40pins DIP package IC, it can be programmed via on-board ICSP interface.

The software is compatible with Windows98 and Windows2000/NT, Windows XP and other operating systems.



Download firmware through ICSP interface

2. Supported IC

10 Series

- PIC10F200* PIC10F202* PIC10F204* PIC10F206*
- PIC10F220* PIC10F222*



12C Series

- PIC12C508 PIC12C508A PIC12C509 PIC12C509A
- PIC12C671 PIC12C672 PIC12CE518 PIC12CE519
- PIC12CE673 PIC12CE674

12F Series

- PIC12F509 PIC12F629 PIC12F635
- PIC12F675 PIC12F683

16C Series

- PIC16C505 PIC16C554 PIC16C558 PIC16C61
- PIC16C62 PIC16C62A PIC16C62B PIC16C63
- PIC16C63A PIC 16C64 PIC16C64A PIC16C65
- PIC16C65A PIC16C65B PIC16C66 PIC16C66A
- PIC16C67 PIC16C620 PIC16C620A PIC16C621
- PIC16C621A PIC16C622 PIC16C622A PIC16C71
- PIC16C71A PIC16C72 PIC16C72A PIC16C73
- PIC16C73A PIC16C73B PIC16C74 PIC16C74A
- PIC16C74B PIC16C76 PIC16C77 PIC16C710
- PIC16C711 PIC16C712 PIC16C716 PIC16C745
- PIC16C765 PIC16C773 PIC16C774 PIC16C83
- PIC16C84

16F Series

- PIC16F505 PIC16F506 PIC16F54 PIC16F57*
- PIC16F59* PIC16F627 PIC16LF627A PIC16F627A
- PIC16F628 PIC16LF628A PIC16F628A PIC16F630
- PIC16F631 PIC16F631-1 PIC16F636 PIC16F636-1
- PIC16F639* PIC16F639-1* PIC16F648A PIC16F676
- PIC16F677 PIC16F677-1 PIC16F684 PIC16F685*
- PIC16F685-1* PIC16F687* PIC16F687*-1 PIC16F688
- PIC16F689* PIC16F689-1* PIC16F690* PIC16F690-1*
- PIC16F72 PIC16F73 PIC16F74
- PIC16F76 PIC16F77 PIC16F737 PIC16F747
- PIC16F767 PIC16F777 PIC16F83 PIC16F84
- PIC16F84A PIC16F87 PIC16F88 PIC16F818
- PIC16F819 PIC16F870 PIC16F871 PIC16F872
- PIC16F873 PIC16F873A PIC16LF873A PIC16F874
- PIC16F874A PIC16F876 PIC16F876A PIC16F877
- PIC16F877A

18 Series

- PIC18F242 PIC18F248 PIC18F252 PIC18F258 PIC18F442
PIC18F448
- PIC18F452 PIC18F458 PIC18F1220 PIC18F1320 PIC18F2220
PIC18F2320



- PIC18F2321 PIC18F4210 PIC18F2331 PIC18F2450 PIC18F2455
PIC18F2480
- PIC18F2510 PIC18F2515 PIC18F2520 PIC18F2550 PIC18F2580
- PIC18F2585 PIC18F2610 PIC18F2620 PIC18F2680 PIC18F4220
PIC18F4320
- PIC18F6525 PIC18F6621 PIC18F8525 PIC18F8621 PIC18F2331
PIC18F2431
- PIC18F4331 PIC18F4431 PIC18F2455 PIC18F2550 PIC18F4455
PIC18F4580 PIC18F2580 PIC18F2420
- PIC18F2520 PIC18F2620 PIC18F6520 PIC18F6620 PIC18F6720
PIC18F6585 PIC18F6680 PIC18F8585
- PIC18F8680
-

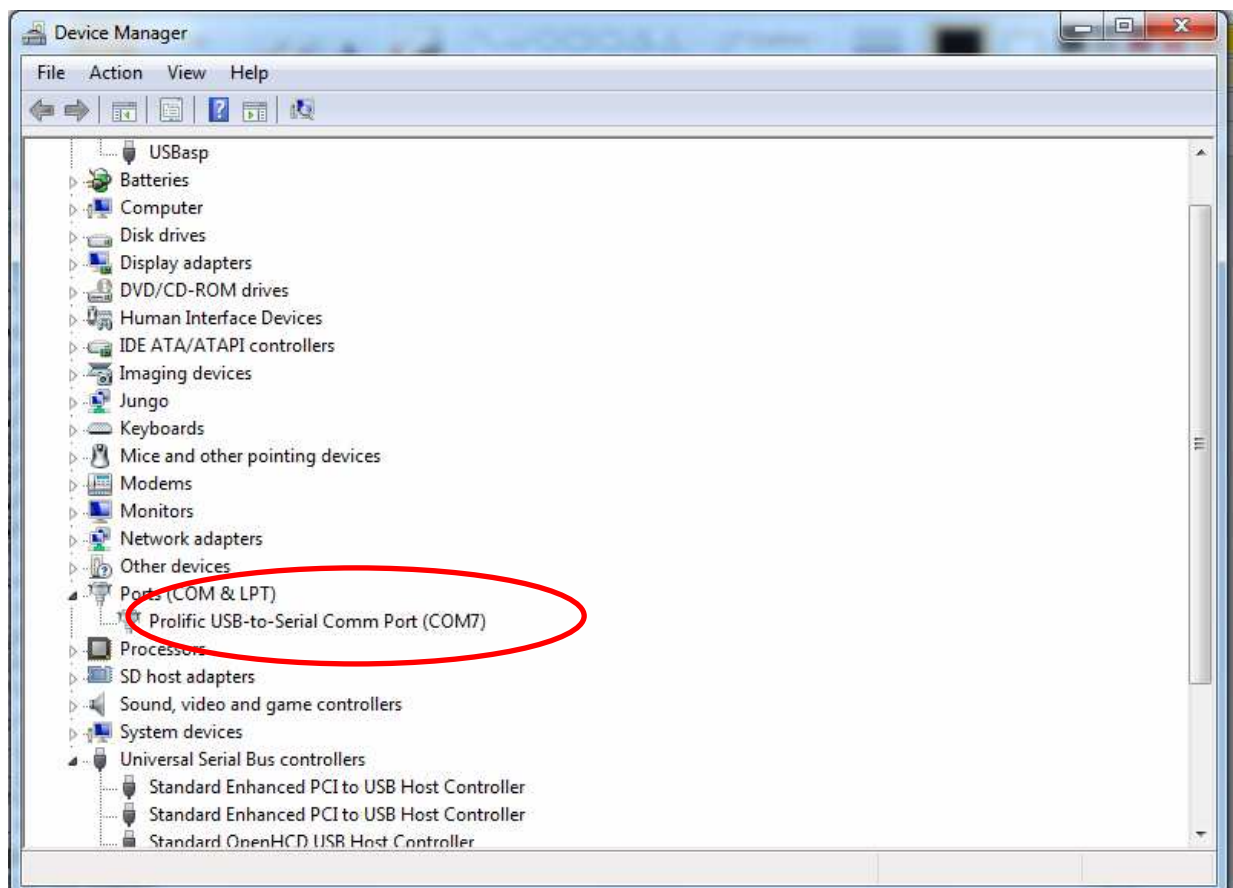
3. Installation

a.) Install PL-2303 Driver (USB to Serial port)

Run PL2303_Prolific_DriverInstaller_v1.8.0.exe. Follow instructions to complete the driver installation.

After installation, plug the provided USB cable into a computer's USB port, the other end plugged into a USB port on the Programmer, PC will auto detect and install the driver for the programmer, and a new virtual COM port is created at this moment.

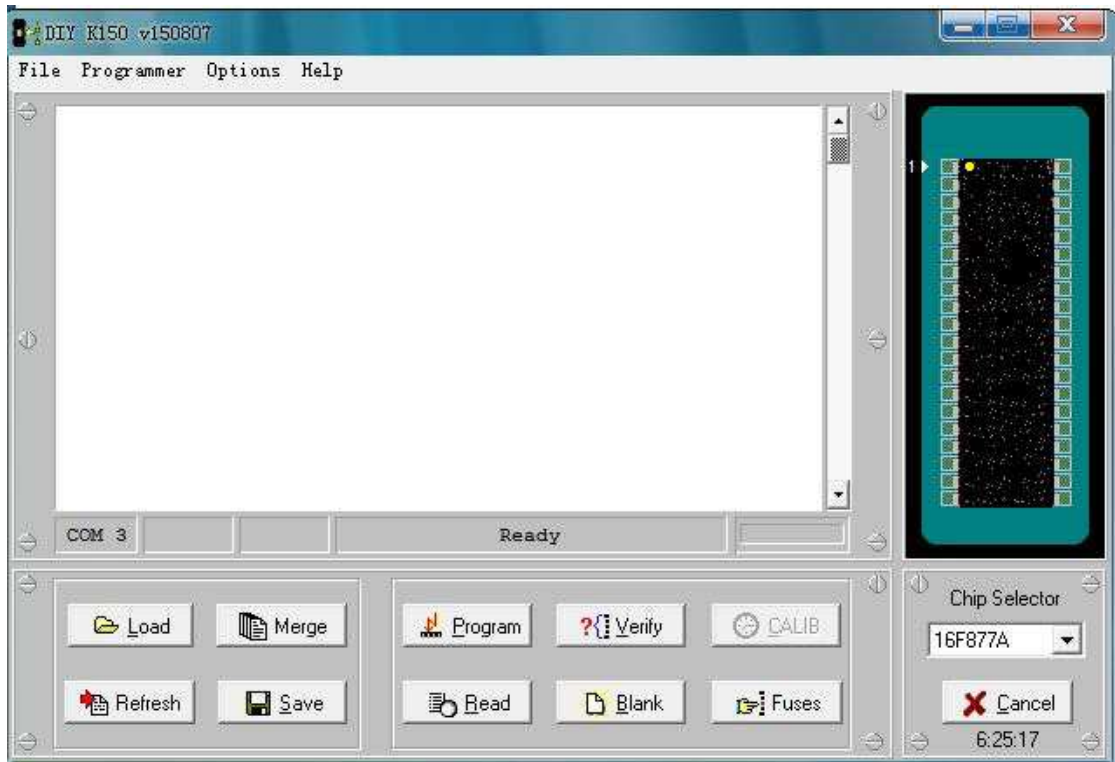
Check the COM port under Control Panel → System → Device Manager as below.



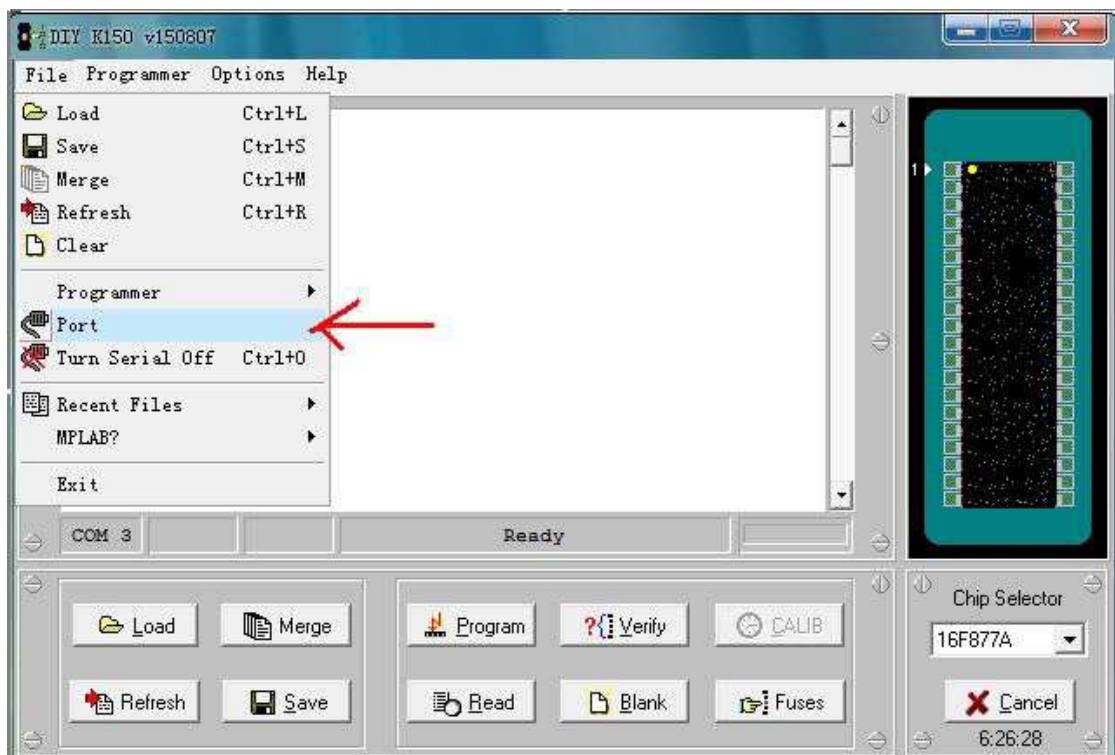
b.) Setup For Programming Software – Microbrn

The software is not require to install, just copy K150 folder to your PC and run microbrn.exe.

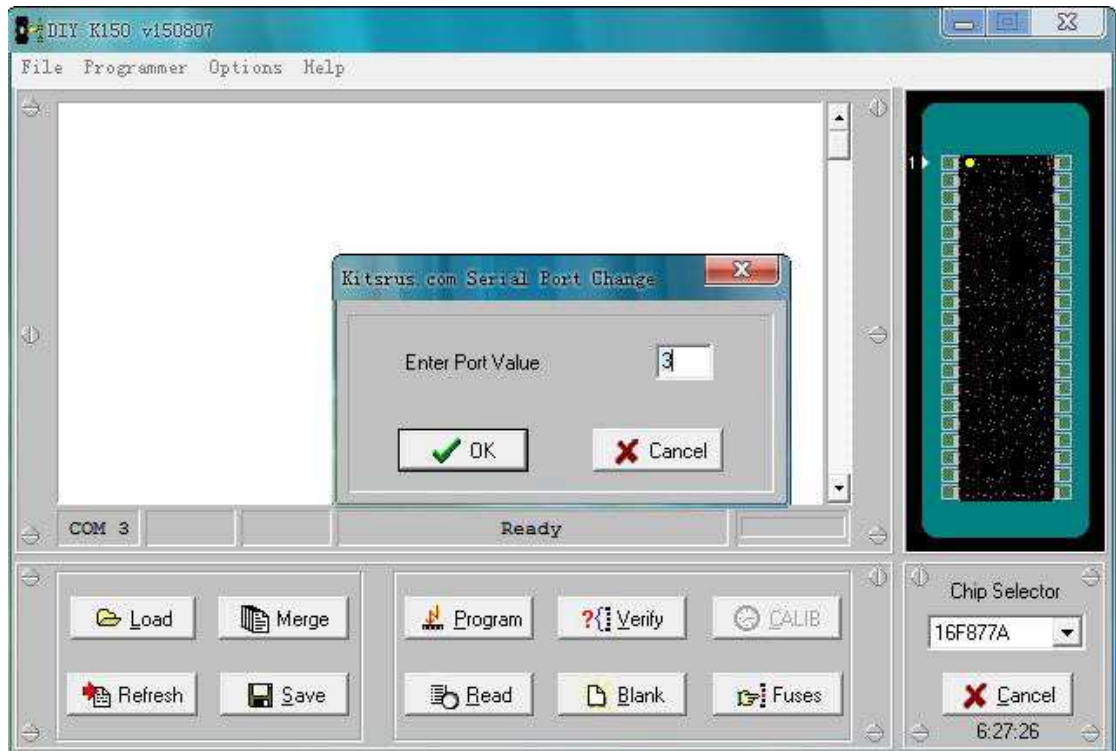
Microbrn software :



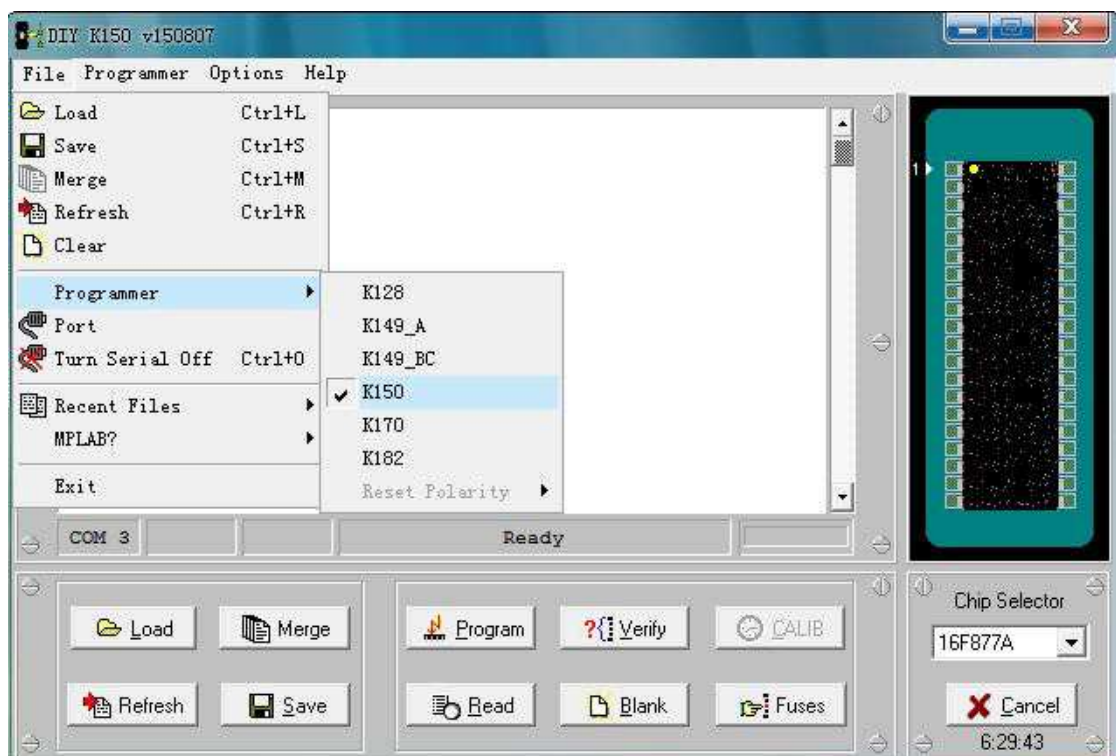
Set COM Port by click Menu → File →Port



Type your Virtual COM Port :



Click Menu → File → Programmer, select K150. Now, setting are completed.



c.) Operation of the Programmer Software.

Basic operation are : Read, Blank Check, Program and Verify.

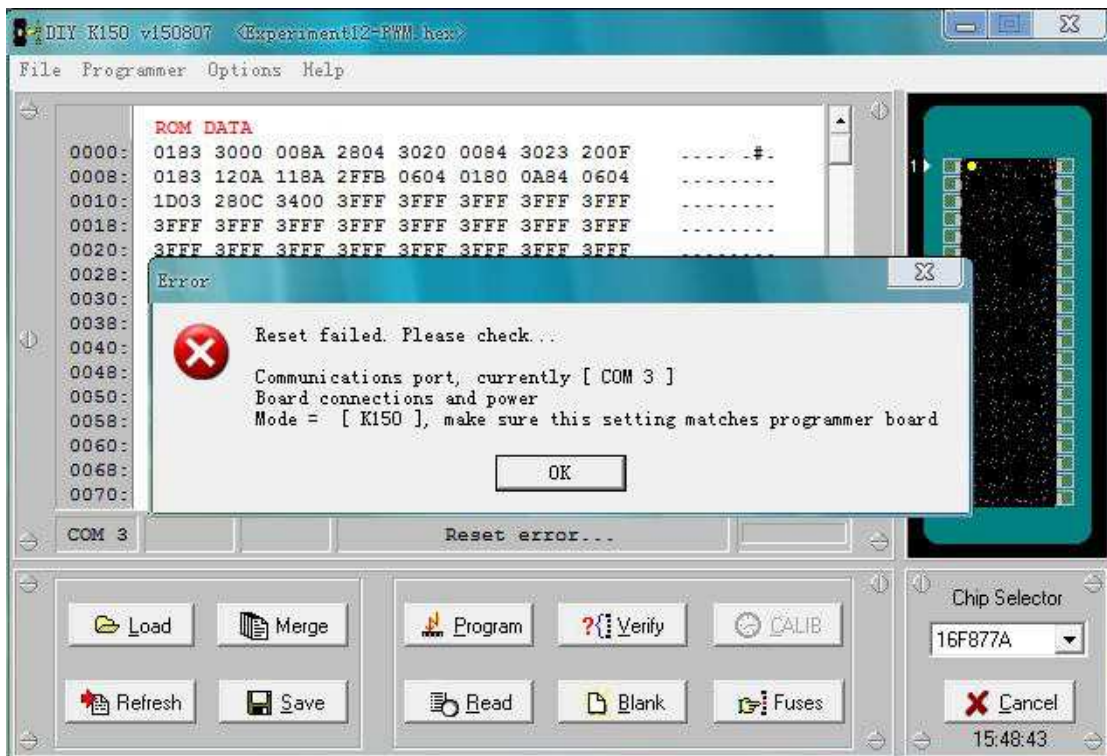
For downloading firmware, select your IC Chip, load your firmware then click Program.

d.) Precaution

There is an orientation of the ZIF socket (refer diagram “Download firmware through ICSP interface”), make sure your IC’s PN1 is matching with ZIF socket’s PIN1 during the IC programming process.

4. FAQ

Question 1: Why I encounter “Reset failed” when running Microbrn as below?

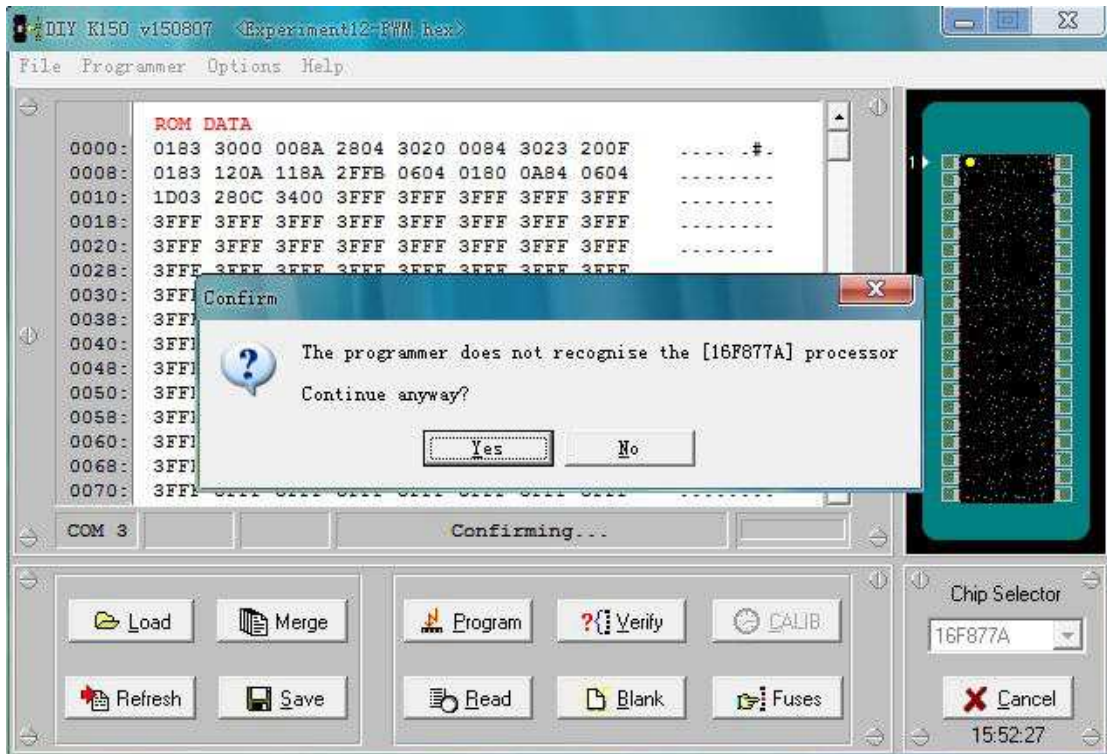


Answer :

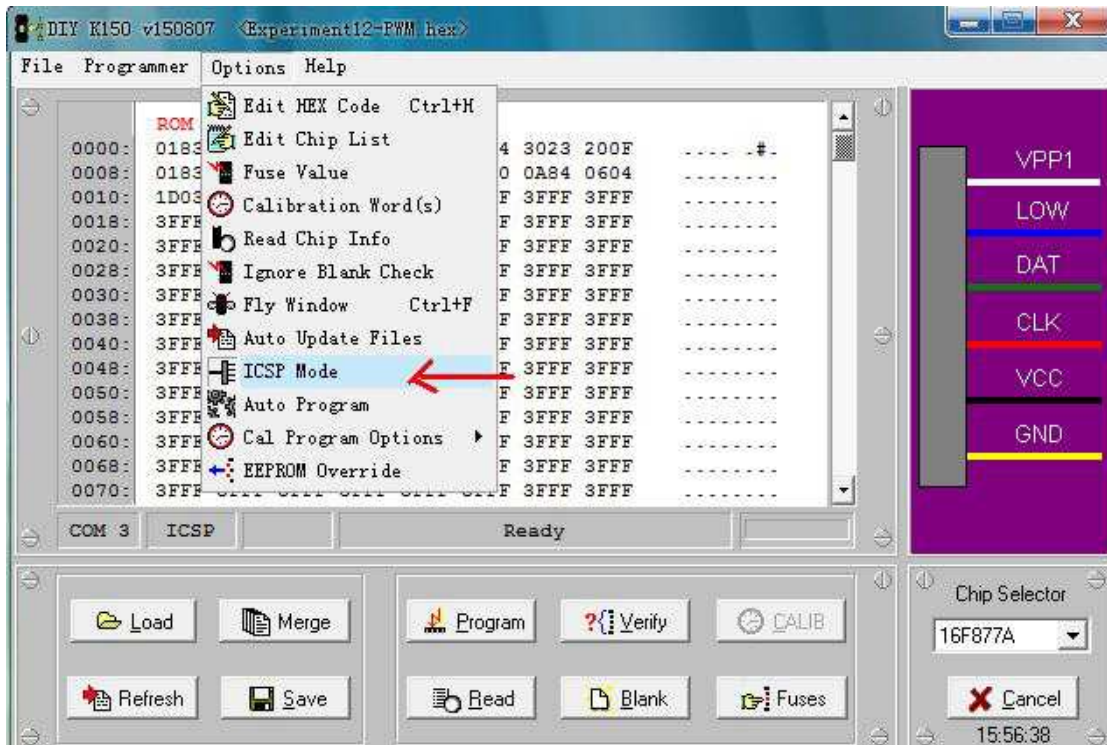
The prompt will come out when you run the programmer software for 2nd times after you close the software for the 1st times.

The approach :

Unplug the USB cable and plug-in again, then just run your software.

Question 2: Why I can do program at ZIF socket but not at ICSP ?

Answer :

It may be due to improper settings, you are required to switch to ICSP mode while using the ICSP interface for programming. How to switch to ICSP mode, please refer below :



5. Kit Contents

- a.) K150 Programmer x1
- b.) Ribbon cable x1
- c.) USB cable x1

6. Warranty

- a.) Product warranty is valid for 3 months.
- b.) Warranty is only applies to manufacturing defect.
- c.) Damage caused by improper use is not cover under warranty.
- d.) Warranty does not cover freight cost for both ways.