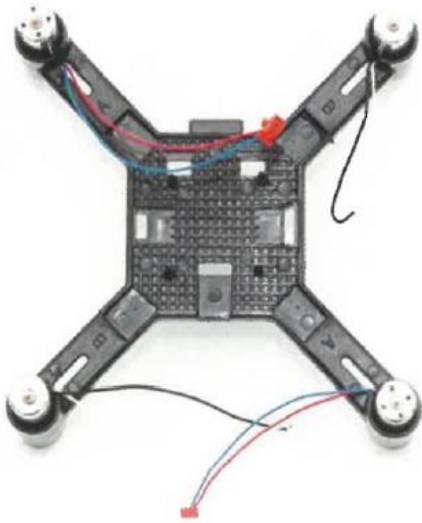


AK-MDRONE: DIY Mini Drone Kit with Remote Control

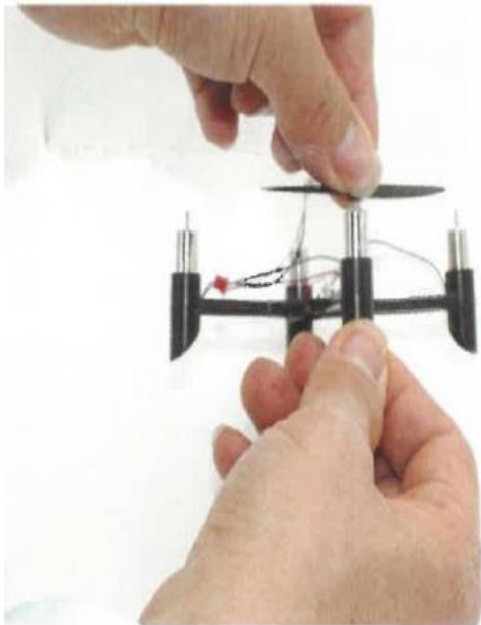


1. Motor Installation

Using the reference diagram, install all four motors onto the drone frame.

Important:

- Carefully match each motor by wire color:
 - **Red & Blue wires**
 - **Black & White wires**
- Motors must be mounted to the **bottom side** of the frame.



2. Propeller Installation

There are two types of propellers: A and B. Each propeller is marked with a logo to indicate its type.

- Match the correct propeller to the motor:
 - Motors with red & blue wires: use A-type propellers.
 - Motors with black & white wires: use B-type propellers.
- Attach each propeller to the corresponding motor shaft. Make sure to refer to the figure to ensure correct placement.
- The side of the frame with the bump is the front of the drone.



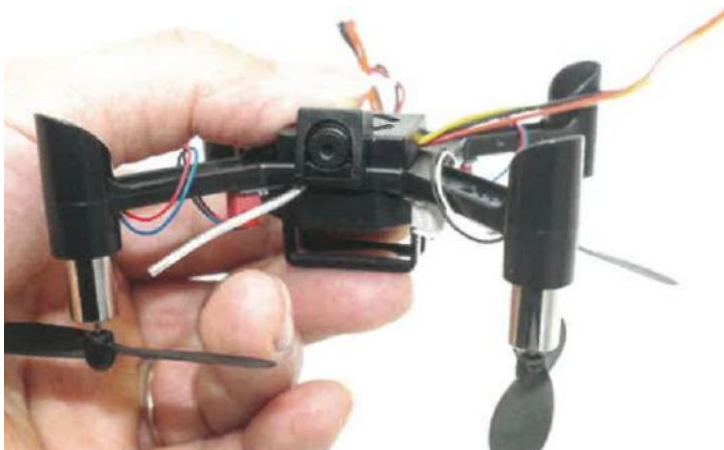
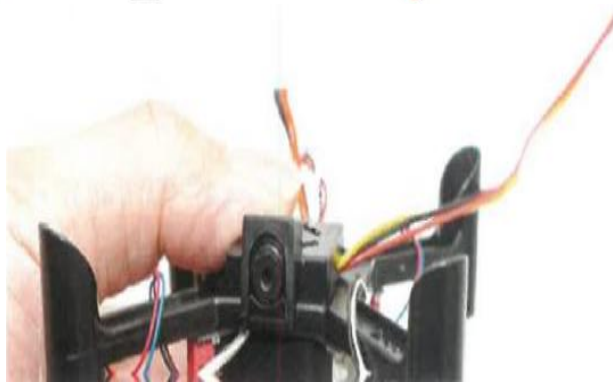
3. Flight Control Motherboard Installation

- Plug the motor connectors into the flight control board:
 - **Red & Blue wire motors** → red slots.
 - **Black & White wire motors** → white slots.
- Wrap the extra wire neatly around each arm to avoid contact with the propellers.
- The socket of the black and white wire motor is plugged into the white interface of the flight control motherboard.
- The excess wire of the motor is wound around the frame arm. Prevent the propeller from scraping on the motor.



4. Camera Installation (Aerial Version Only)

- Place the camera inside the provided box.
- Connect the three camera wires to the designated ports on the motherboard.
 - The gray wire is the antenna.
- Secure the camera box to the frame using the buckle. Tuck any extra wire neatly outside the box.





5. Battery Installation

- Install the battery holder on the frame using the built-in mounting clips.
- Insert the battery into the compartment.
- Adjust the depth of the battery to balance the drone's center of gravity.



6. Powering On

- Connect the battery's power plug to the corresponding socket on the motherboard.
 - Red wire to red, black wire to black.
- ⚠ WARNING: Reversing the power wires will damage the motherboard permanently.



Note: This manual is simply a guide to get you started.