

# HU-044音乐电平指示版立体声蓝牙音响套件

Original 核芯风暴智能科技 核芯风暴 2022年08月15日 02:13



核芯风暴

颠覆思维 突破认知

105篇原创内容

公众号

 关注公众号再阅读! 

 防止下次再迷路!! 

09:00

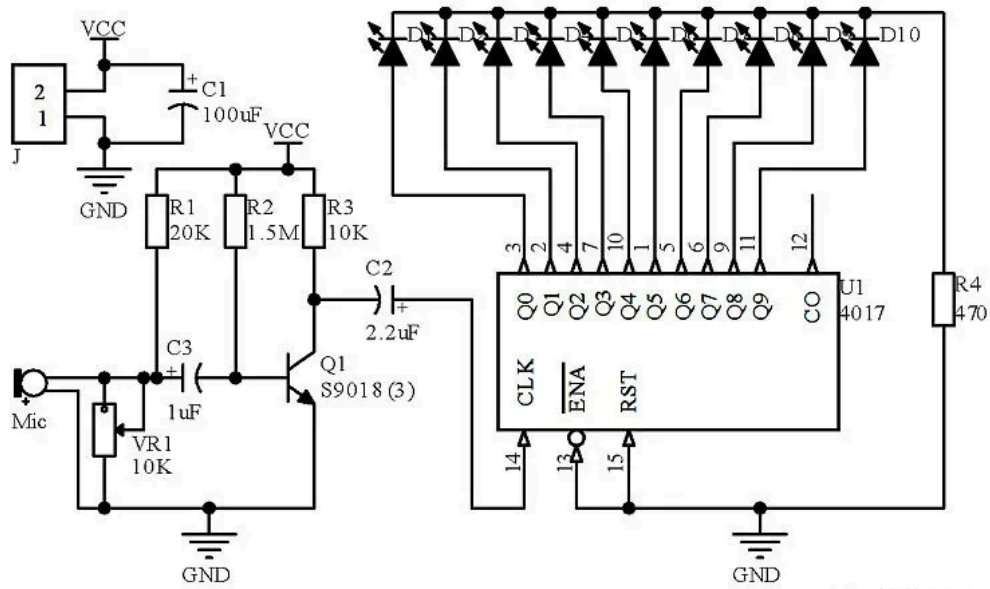
  点击上方播放安装视频  

## I .元件清单BOM

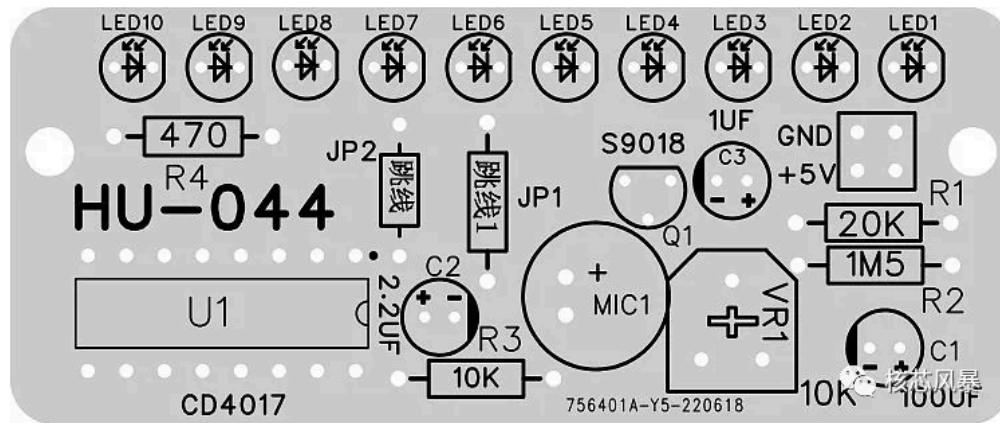
序号 S/N	名称参数	Name Parameter	标号 Label	数量Number
--------	------	----------------	----------	----------

1	电路板	PCB	/	1
2	蓝牙播放器解码板	Bluetooth player decoding board	/	1
3	遥控器	Remote control	/	1
4	4欧3瓦魔球音响喇叭	4 Oh 3 W Magic Ball Sound Hornmagic ball sound horn	/	2
5	PH2.0单头线端子线	PH2.0 Single Head Terminal Line	/	3
6	0.8米 单公头USB电源线	0.8 m single male USB power cord	/	1
7	120MM 红黑线两头上锡	Tin on both ends of 120MM red and black lines	/	1
8	黑色2脚2档船形开关	Black 2-leg 2-gear boat-shaped switch	/	1
9	直插 25V100 $\mu$ F电解电容	In-line 25V 100 $\mu$ F electrolytic capacitor	C1	1
10	直立式50V 2.2 $\mu$ F电解电容器	In-Line 50V 2.2 $\mu$ F Electrolytic Capacitor	C2	1
11	直插50V 1 $\mu$ F电解电容	In-line 50V 1 $\mu$ F electrolytic capacitor	C3	1
12	3MM白发蓝高亮LED	3MM White Hair Blue Highlight LED	LED1---LED10	10
13	9 x 7 mm 驻极体麦克风, 带针式麦克风 (灵敏度 58)	9 x 7 mm electret microphone with pin microphone (se nsitivity 58)	MIC1	1
14	三极管 S9018 直插 TO-92 小功率三极管 H 型 50MA/30V NPN	Transistor S9018 in-line TO-92 low power transistor H-t ype 50MA/30V NPN	Q1	1
15	1/4W 20K $\Omega$ 色环电阻 (红黑黑红棕)	1/4 W 20K $\Omega$ color ring resistor (Red, black, black, red and brown)	R1	2
16	1/4W 1.5M $\Omega$ 色环电阻 (棕绿黑黄棕)	1/4W 1.5M $\Omega$ color ring resistance (Brown green black yellow brown)	R2	2
17	1/4 W 10 k $\Omega$ 色环电阻 (棕黑黑红棕)	1/4W 10K $\Omega$ color ring resistance (Brown-black-black-red-brown)	R3	2
18	1/4W 470 $\Omega$ 色环电阻 (黄紫黑黑棕)	1/4W 470 $\Omega$ color ring resistor (yellow purple black black brown)	R4	2
19	CD4017BE芯片	CD4017BE MCU	U1	1
20	10K欧姆蓝白可调电阻器	10k ohm blue and white adjustable resistor	VR1	1
21	外壳+螺丝	Shell+Screw	/	1
22	IC座 IC插座 直插 16P	IC socket IC socket straight plug 16P	U1	1

## II. 电路原理&元件分布图 Schematic&Component map

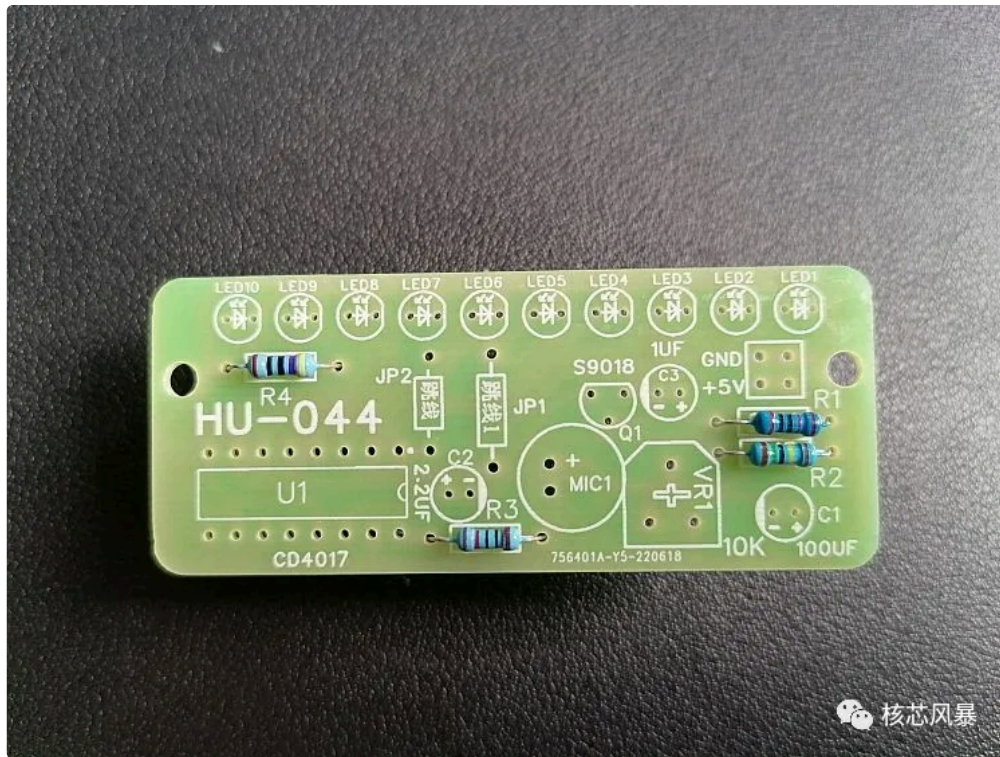


核芯风暴



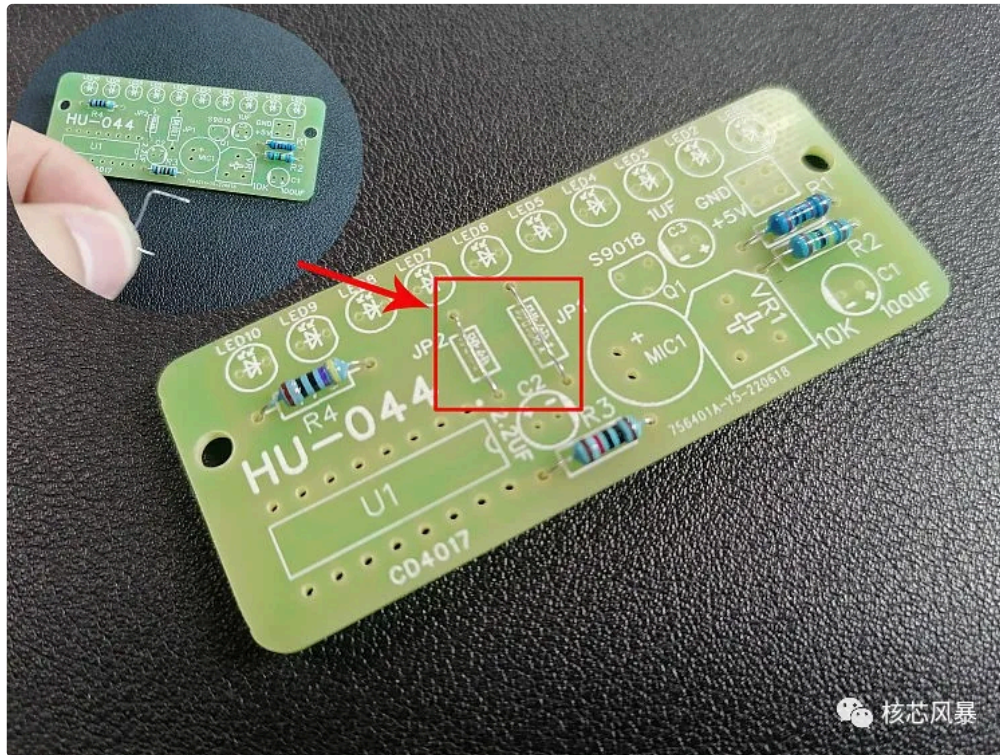
核芯风暴

### III. 焊接步骤及其注意事项Welding&Notes



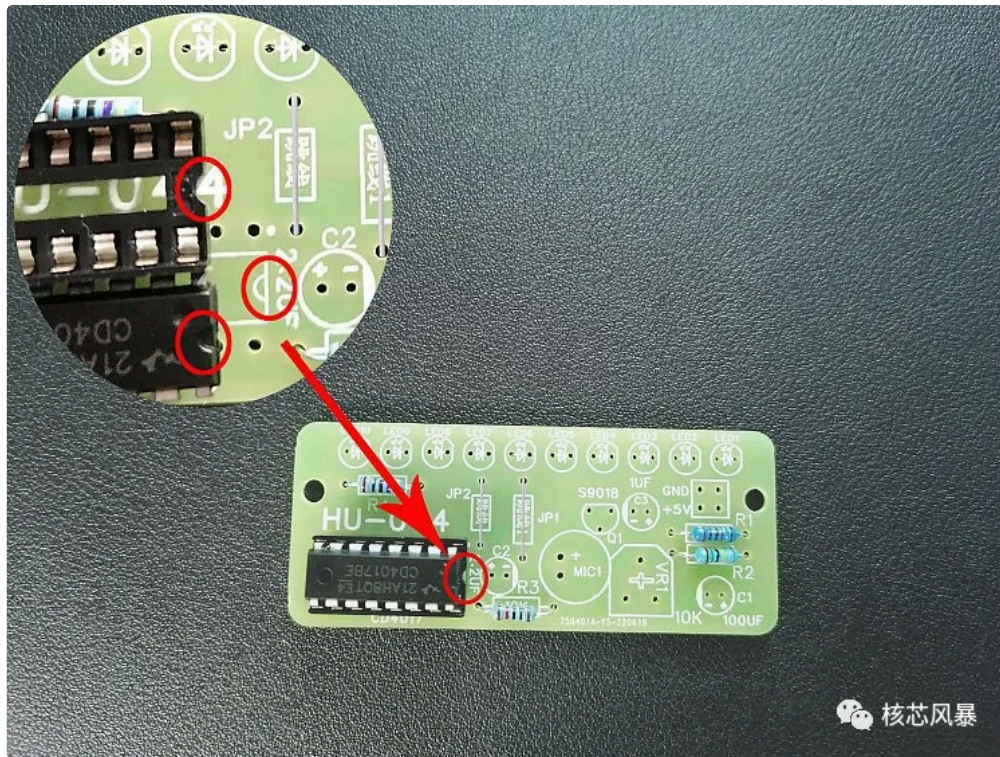
1.对照丝印插入对应的电阻并焊接。

Insert the corresponding resistor against screen printing and weld it.



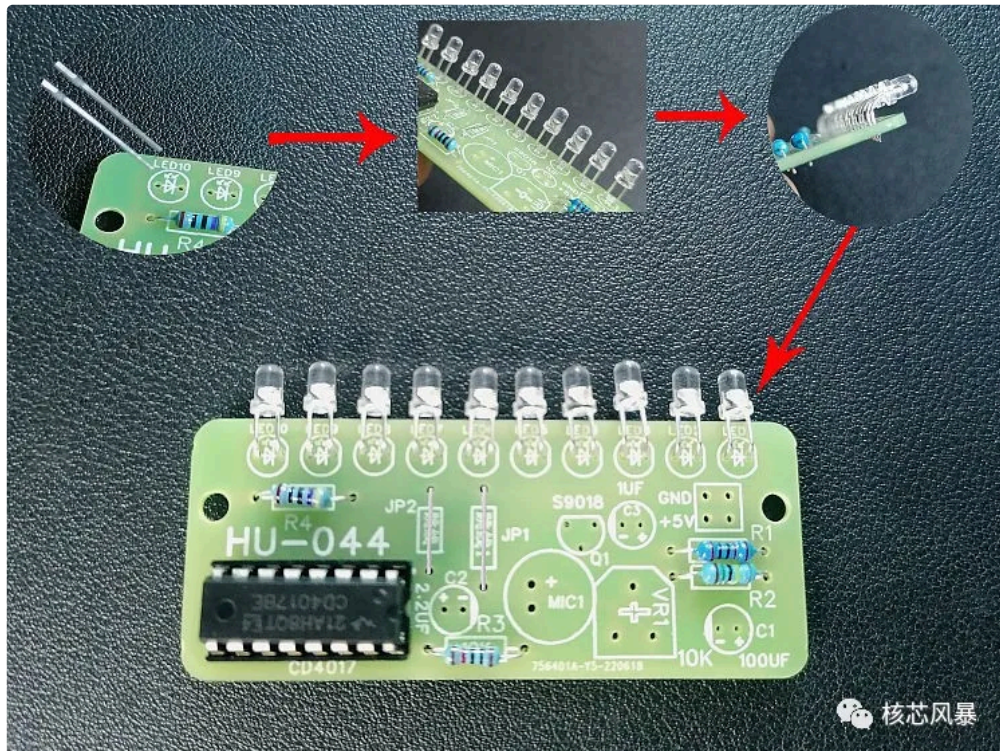
2.用剪下来的引脚折弯成合适大小做成跳线，插入跳线JP1和JP2并焊接。

Bend the cut pins to a suitable size to make jumpers, insert jumpers JP1 and JP2 and weld them.



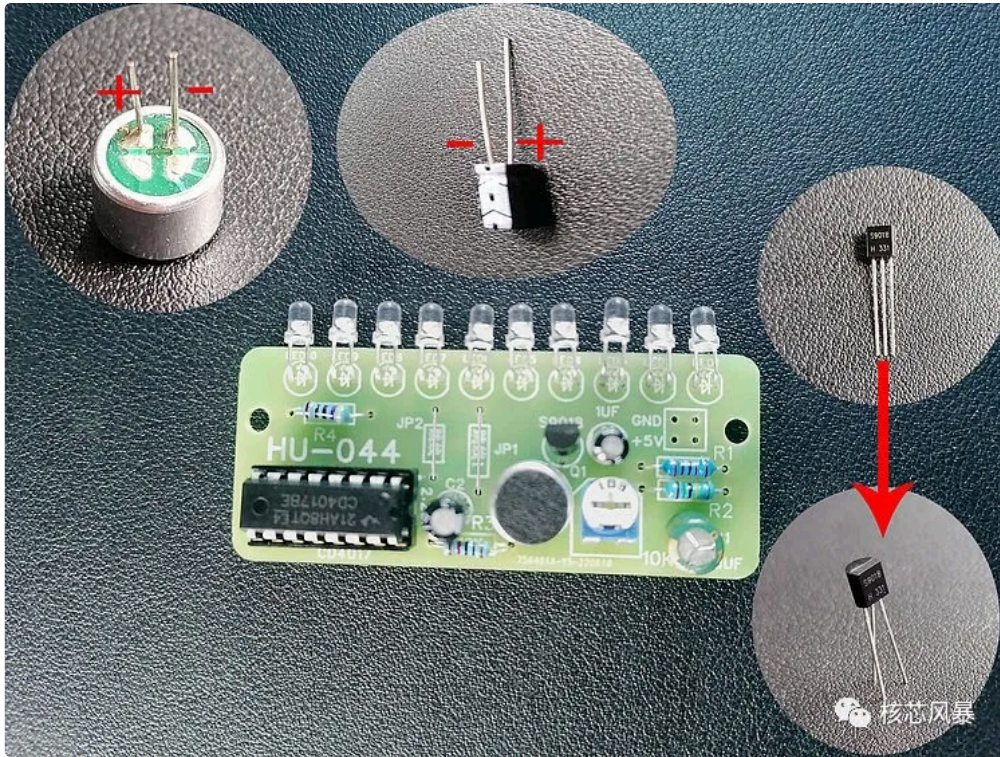
3.焊接上IC插座，安装CD4017单片机（U形缺口与丝印图案对应）。

Weld the IC socket, Install CD4017 mputer (U-shaped notch corresponds to screen printing pattern).



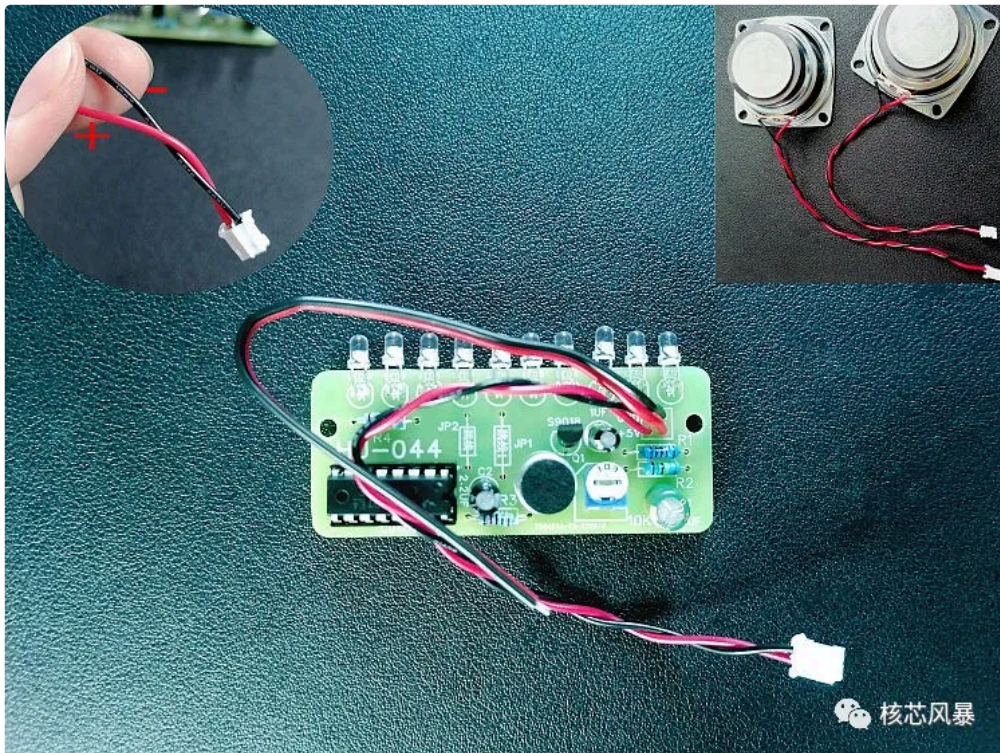
4.插入LED（长正极）不要插到底，焊接后折弯90度。

Insert LED (long positive electrode), do not insert it to the bottom, and bend it 90 degrees after welding.



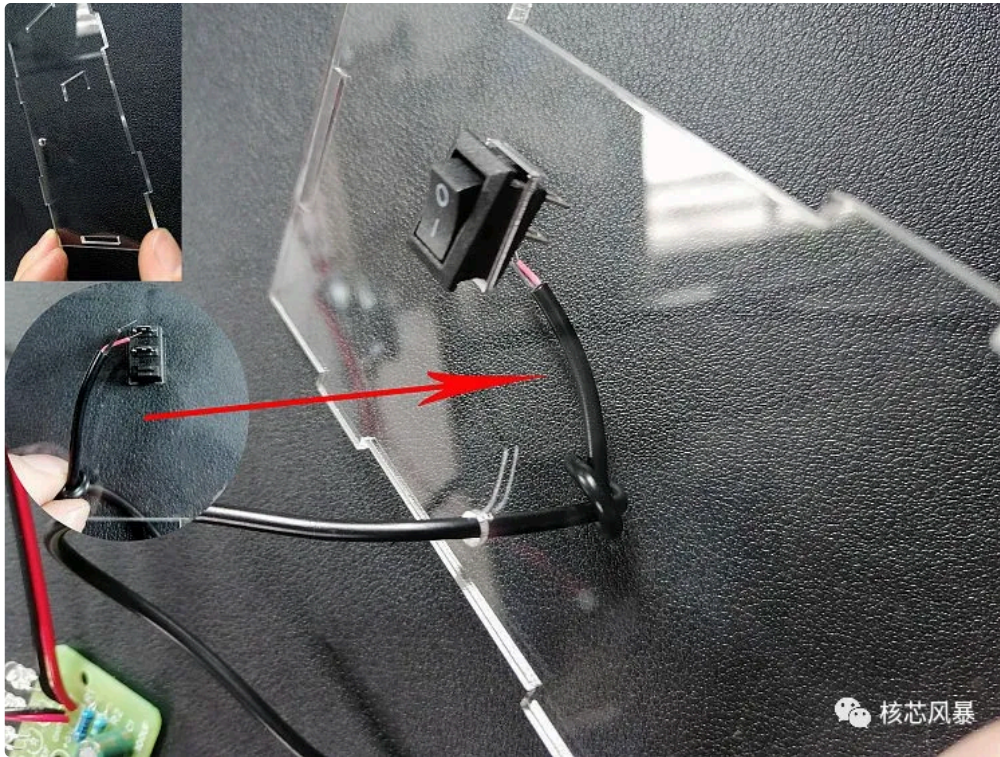
5.继续把剩余元器件焊接到PCB上，对应丝印方向，禁止插反。

Continue to solder the remaining components to PCB, corresponding to the screen printing direction, and prohibit inserting them backwards.



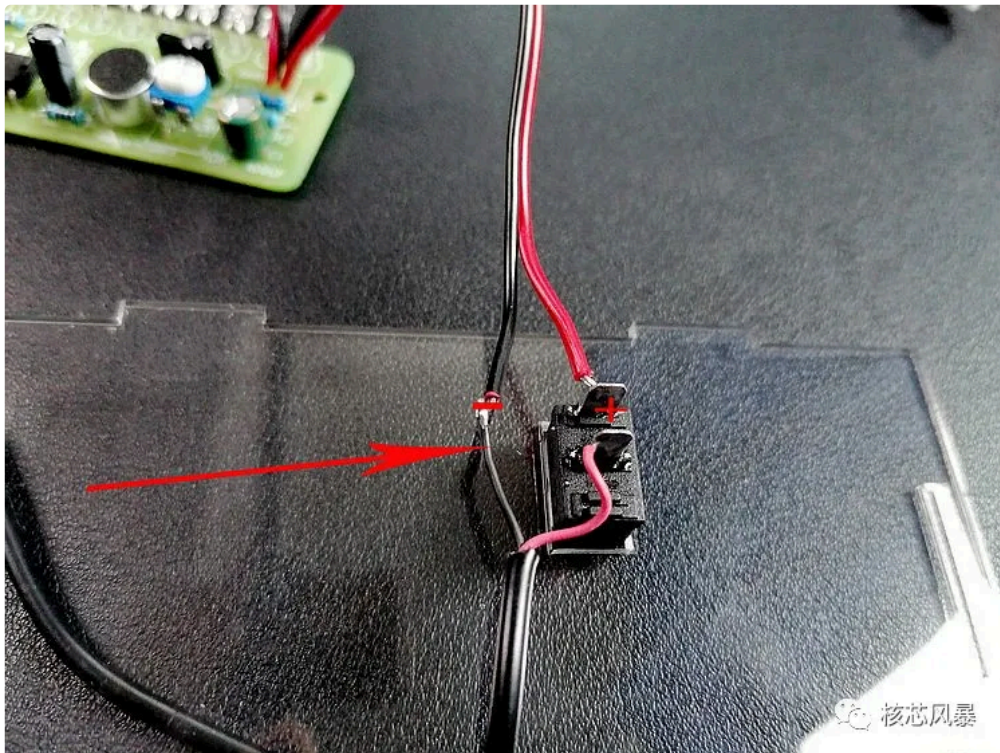
6.把3条端子线、红黑线焊接到PCB和喇叭上。红色正极。

Weld red and black parallel lines and 3 terminal lines. Red is the positive pole.



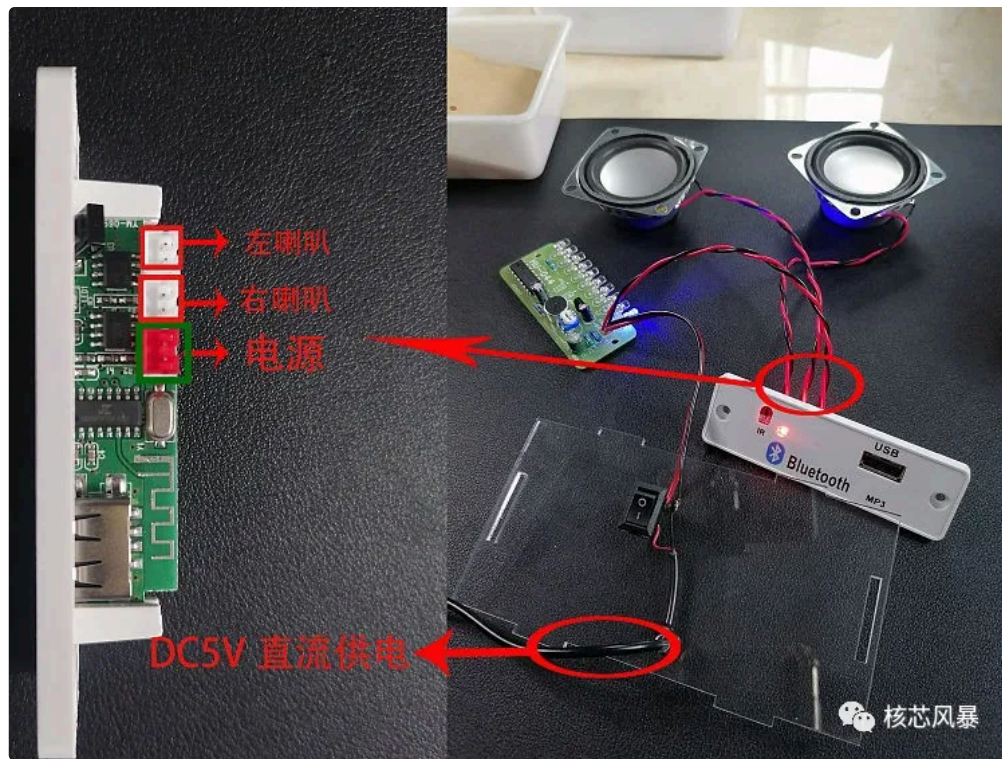
7.后面一片外壳撕掉保护膜，从外穿入电源线及船形状开关，预留合适长度打结。

Tear off the protective film on the back shell, penetrate the power cord and boat-shaped switch from the outside, and reserve a suitable length to tie knots.



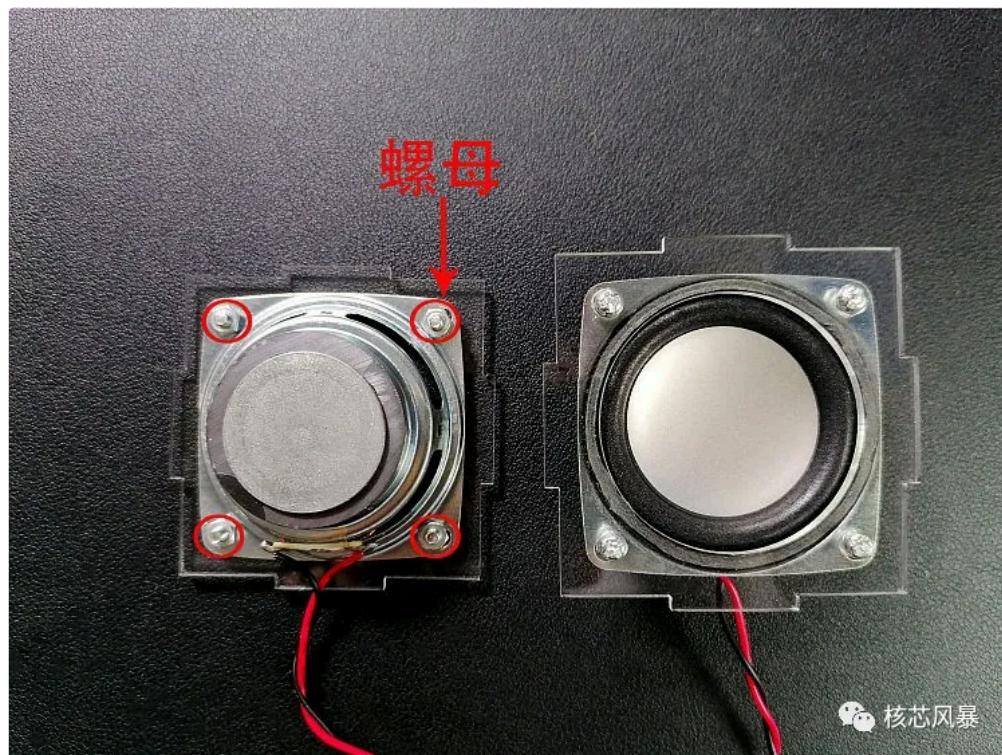
8.将红黑并线与电源线的负极焊接到一起，正极分别焊接在船形开关两端。

The red and black parallel wires are welded together with the negative electrode of the power cord, and the positive electrode is welded at both ends of the boat switch respectively.



9.将PCB和喇叭连接到蓝牙解码板上, 电源线连接5V直流电源, 开机测试功能正常后再安装外壳。  
Connect PCB and speaker to Bluetooth decoding board, connect 5V DC power supply, and install the shell after starting up and testing the normal function.

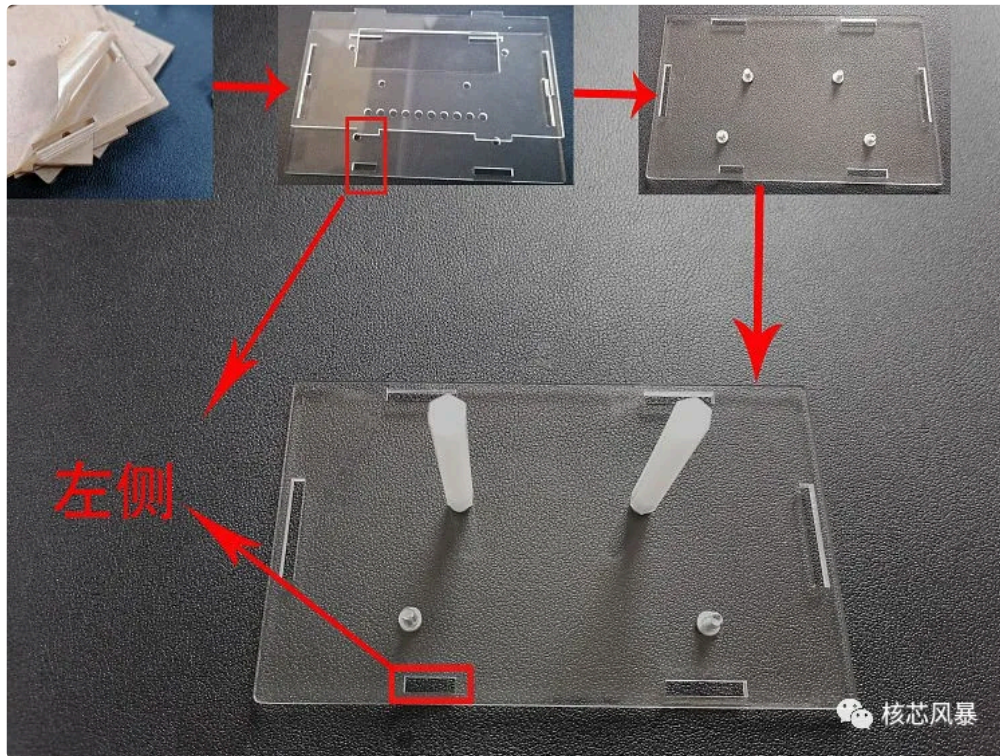
#### IV.外壳安装Shell Installation



1.撕掉所有外壳的保护膜, 先将两个喇叭用螺丝固定在外壳上。然后用螺母从里面固定。

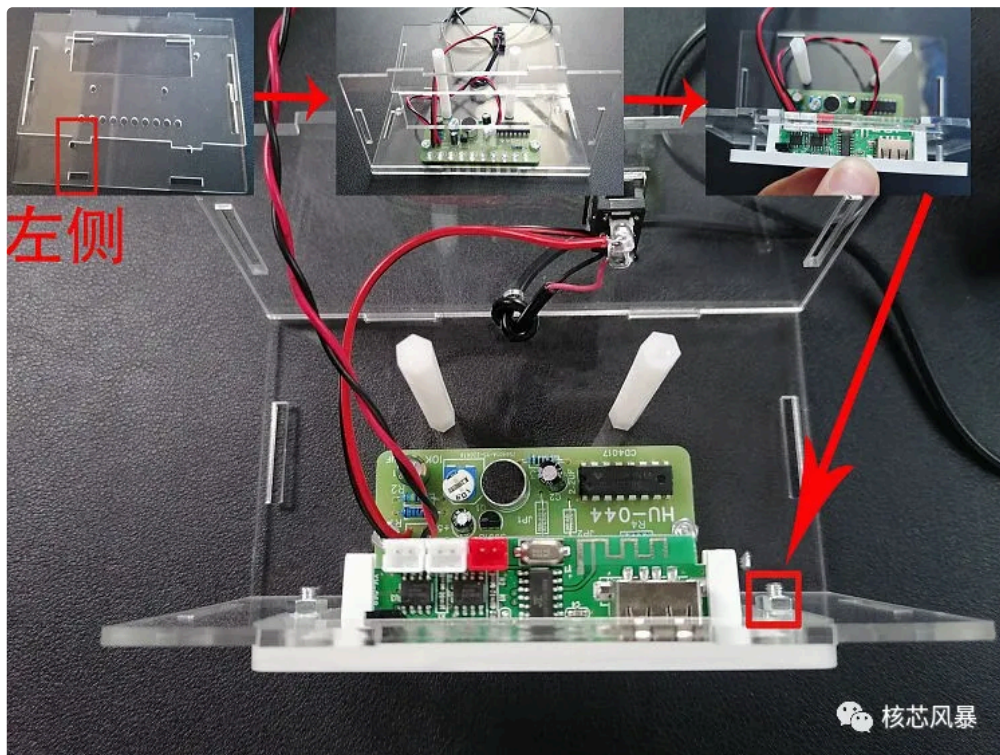


Tear off the protective film of all enclosures, and first connect the two horns to the enclosure with screws. Then fix it from the inside with nuts.



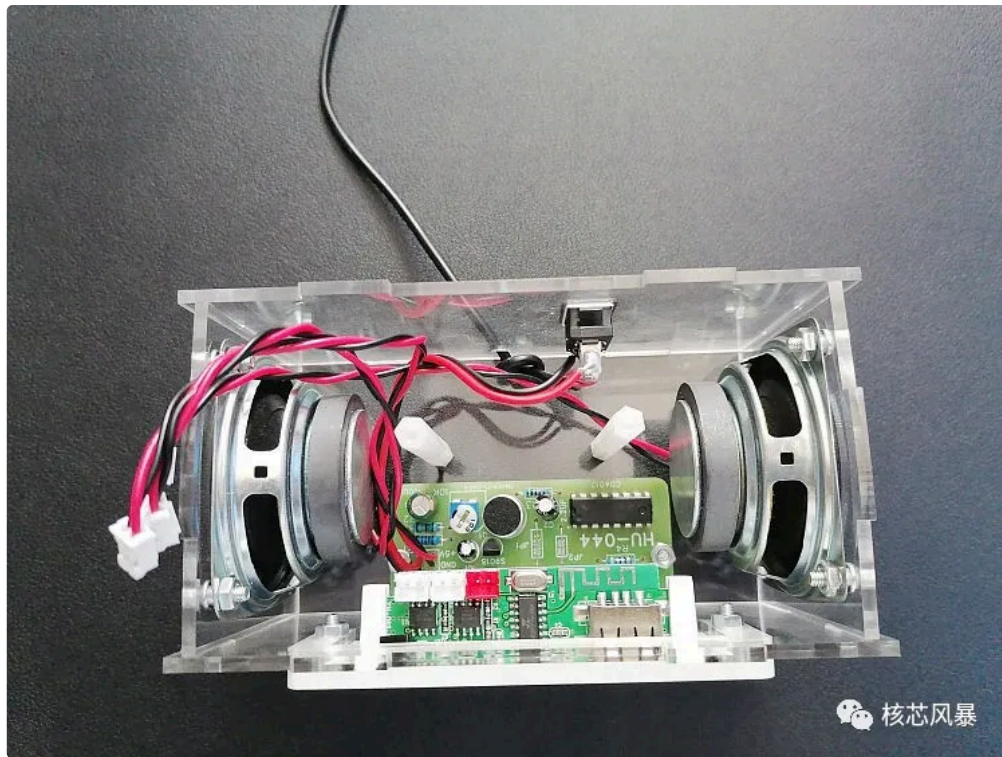
2.先确认底部和前面的外壳安装方向，开口短的一面在左侧，再从底部插入螺丝并拧上尼龙柱。

First confirm the installation direction of the bottom and front housing, with the short side of the opening on the left side, then insert screws from the bottom and screw on the nylon column.



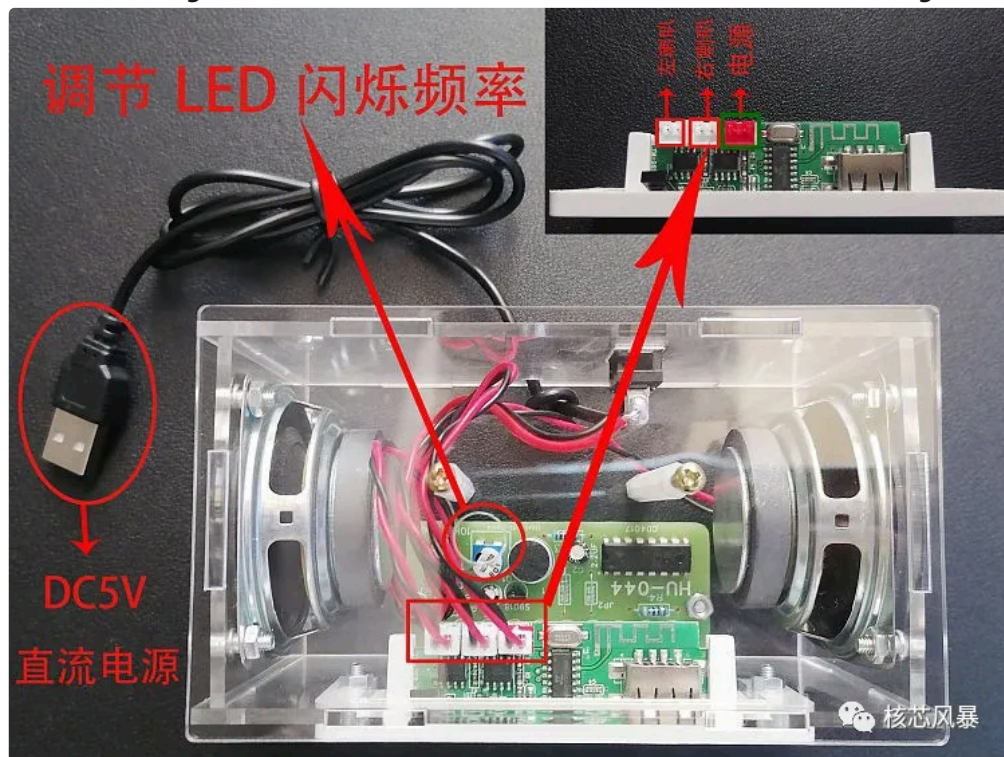
3.因为焊接有差异，最好PCB和前面外壳同时安装，螺丝插入蓝牙解码板，用螺母固定到外壳上。

Because of the difference in welding, it is best to install PCB and front housing at the same time, insert screws into Bluetooth decoding board and fix it to the housing with nuts.



4. 安装上左右喇叭，焊接有端子线的一面朝下。

Install the left and right horns, with the side welded with terminal wires facing down.



5. 连接上对应的端子线，盖上外壳，用最长螺丝固定！然后开机测试，完成安装！

Connect the corresponding terminal wire, cover the shell and fix it with the longest screw!

Then boot the test and complete the installation!



6.遥控按键说明，使用时请取出放电保护片。

Remote control button instructions, please take out the discharge protection sheet when using.

V.备注Note:

焊接过程中要遵循从低到高的原则，跳线可以用剪下来的引脚或者其它导线来连接，确认好元件焊接的方向与丝印一致，没有漏焊、虚焊、连焊等不良现象。由于每个人焊接出来的都有差异！PCB 和前面的外壳最好同时安装，安装前务必确认好安装方向正确！电子元件及有机玻璃外壳属于易损、易碎部件！制作时严禁暴力组装拆卸！

The principle of "from low to high" should be followed in the welding process. Jumpers can be connected with cut pins or other wires. Make sure that the welding direction of components is consistent with the silk screen, and there are no bad phenomena such as missing welding, faulty welding, continuous welding, etc. Because everyone welded out of the difference! It is best to install the PCB and the front shell at the same time. Before installation, be sure to confirm that the installation direction is correct! Electronic components and plexiglass shells are vulnerable and fragile parts! Violent assembly and disassembly are strictly prohibited during production!



核芯风暴  
颠覆思维 突破认知  
105篇原创内容

公众号

 [关注下次寻找不迷路](#) 

 [更多内容关注公众号](#) 



[套件安装教程合集 78](#)   [音箱/音响安装教程合集 10](#)

[套件安装教程合集 · 目录](#)

[上一篇](#)

[HU-040 电子琴套件HU-040 Electronic organ Kit](#)

[下一篇](#)

[HU-045 12款两用套装](#)

修改于2023年06月20日