

# USER INSTRUCTION

MiNi Wifi LED Controller

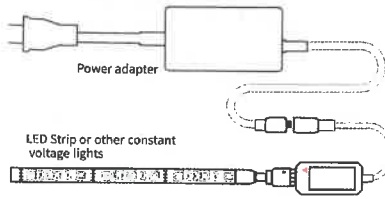


RGBW LED CONTROLLER

## I. Product Parameter:

Category	LED Controller
Domination Principle	WiFi
APP	Magic Home Pro
Operation Platform	Android 4.0 or iOS 9.0 or later
Channels	RGBW
Input Voltage	DC(5-24)V
Max Output Power	100W
Working Temperature	-20~+55°C
Control Distance	Visible distance 30M
Certification	CE, RoHS, FCC
Net Weight	33.5g
Dimension(L*B*H)	53MM*24MM*11MM
Carton Size(L*B*H)	50CM*25CM*21CM
QTY Per Carton	100set/CTN

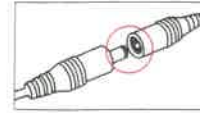
## II. Wire Connection



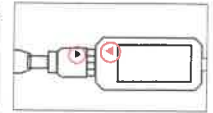
Connection schematic diagram

-1-

The connection between the controller and the power supply



Controller and device connection

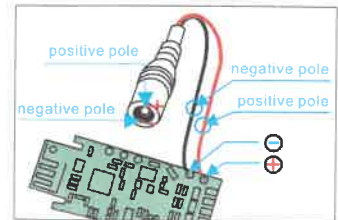


### Notice:

It is necessary to ensure that the red arrow of the controller corresponds to the black arrow of the device end, otherwise the device will have a short circuit.

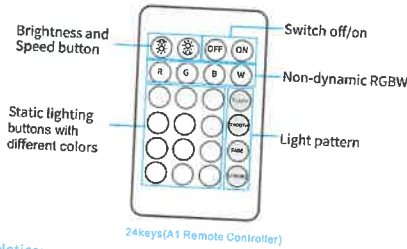
### Important Notice:

If you need to make DIY modification to the device, please contact our customer service and operate under their guidance. Precautions: please follow the diagram instruction when doing DIY modifications.



-2-

## III. Key Instruction



24keys(A1 Remote Controller)

### Notice:

Remote control code matching: power on the device, hold down "ON" key for 5 seconds, the device flashes slowly to indicate successful code matching.

Remote code clearing: power on the device, hold down "OFF" key for 5 seconds, the device flashes quickly to indicate successful clearing.

Remark: Scene mode can only record one custom color

## IV. Instructions

How to connect the controller to Wi-Fi network?

Before Setting(Install the APP):

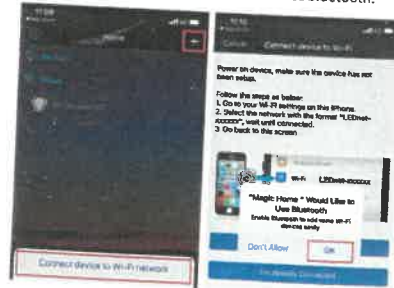
- Search for "Magic Home Pro" on the App store or Google Play Store, or scan the QR code to download it.
- (Important) Connect your phone to home wifi network (2.4GHz wifi only).
- Power on the device.

## Now Setting:

a) Register/Login your Magic Home account.

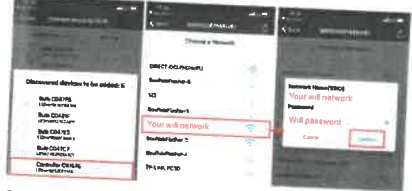


b) Open the App and Click on "+" button on top right corner, then select "connect device to Wi-Fi network". "Magic Home Pro" will ask you to enable bluetooth for direct connection to Wi-Fi router, please select "OK" to turn on the device bluetooth.



-4-

c) Select your device and add it to WiFi router. Select the corresponding device from the pop-up list and follow the prompts to add the device to the router.



Remark: The device name can be modified after successfully connecting to router.



Scan the below QR code to download Magic Home free APP



APP

If there are any other questions, please scan the below QR code to see more detail operations



Instruction

-5-

-3-