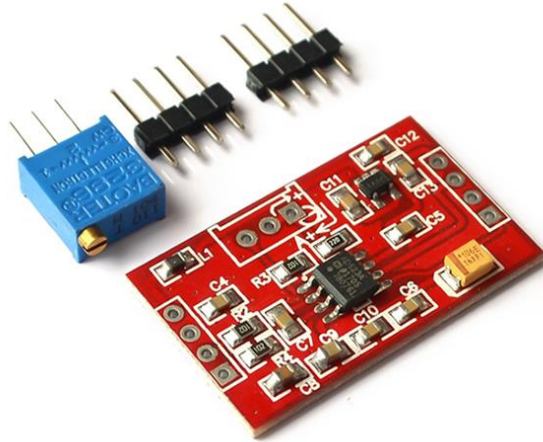




AD623 / AD620 Millivolt / Microvolt Voltage Signal Amplifier Module



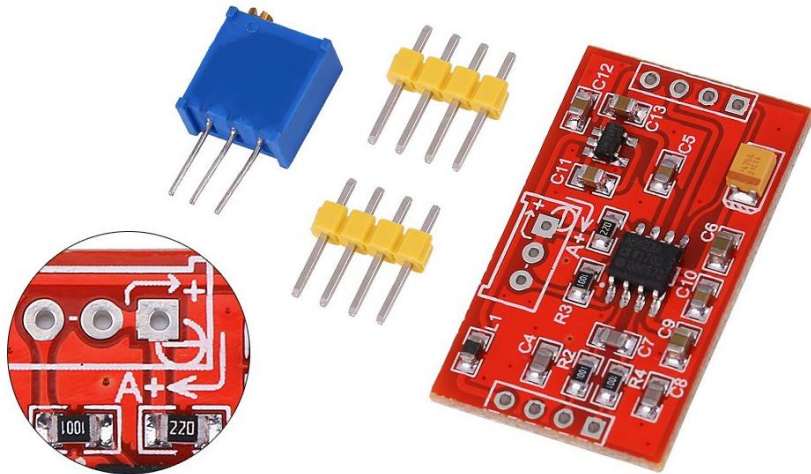
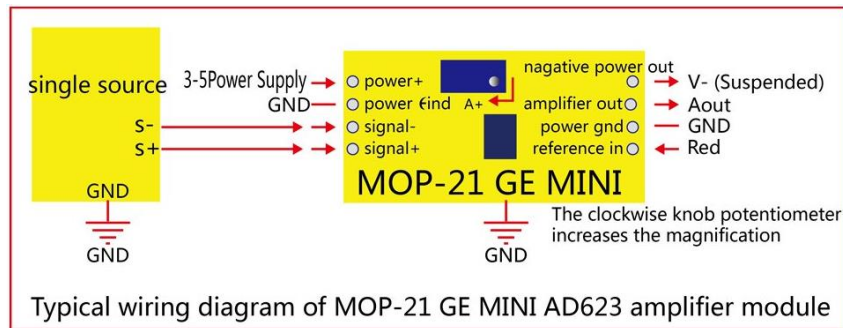
Features:

1. High-end dedicated instrumentation amplifier AD623 core with high precision and good linearity.
2. Single power supply, support 3-5.5V power supply, easy to use.
3. Integrated built-in negative voltage generating module, dual power supply operation, easy to deal with negative signal / AC signal.
4. Power input LC filtering, pure and stable, to ensure the stability of signal amplification.
5. Rail-to-rail output, the maximum output swing is $\pm V_{CC}$, far beyond the LM358 core products / AD620 (only to $V_{CC}-1.5V$)
6. Magnification 2-1000 times adjustable with potentiometer, adapt to different applications.
7. The module is simple, expandable, and convenient for secondary development.

Specifications:

- Input Range: $0.5V_{CC}$ (i.e. the voltage between $S+/S-$ is less than half of the power supply voltage)
- Output Range: $\pm V_{CC}$ (rail to rail)
- Magnification: 2-1000 times (adjustable with potentiometer)
- Power Consumption: 150uA (typical) / 650uA (maximum)
- Power Supply: 3-5.5V
- Gain Accuracy: 0.35% ($G>2$) 0.10% ($G=2$)
- Input Offset Voltage: 100-200uV
- Input Offset Drift: 1uv/ $^{\circ}C$
- Common Mode Rejection Ratio: 90db
- Gain Bandwidth: 800KHz
- PCB Size: 40*23mm/1.57*0.9in

Wiring:



Package Contents:

- 1 x Voltage Amplifier
- 1 x Potentiometer
- 2 x Pin Headers

More Detailed Photos:

