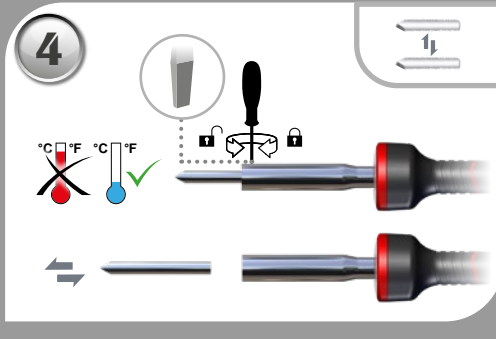


Weller®



WLIR30
WLIR60
WLIR80
WLIRPK80



EN English

Read these instructions and the safety guidelines carefully before starting up the unit and starting work.
Failure to observe the safety regulations results in a risk to life and limb.
Keep these instructions in a place that is accessible to all users.
Please adhere to the operating instructions of the connected devices.

Safety information

This appliance can be used by children aged from 8 years and above and persons with reduced physical, sensory or mental capabilities or lack of experience and knowledge if they have been given supervision or instruction concerning use of the appliance in a safe way and understand the hazards involved. Children shall not play with the appliance.
Cleaning and user maintenance shall not be made by children without supervision.

Keep other persons well away from your workplace.
The work area is out of bounds for children and unauthorised persons. Never allow other persons to touch the soldering tool or cable.

WARNING Electrical shock

- Do not use the soldering tool in a damp or wet environment.
- Never work on voltage-carrying parts.

WARNING Fire hazard

Covering the soldering iron or the safety holder poses a fire hazard. Always keep objects well away from the soldering iron and safety holder.

- Always keep objects well away from the soldering iron and safety holder.
- Keep all combustible objects, liquids or gases well away from the hot soldering tool.
- Do not place or leave the hot soldering tip on the worktop or on plastic surfaces.
- Avoid unintentional operation.
- Disconnect the soldering tool from the power supply while not in use.
- Keep explosive and flammable objects well away from the device.

WARNING Risk of burns

The soldering tip becomes very hot during soldering work. There is a risk of burns from touching the tips. After the soldering process, the soldering tool and the workpiece holder are still hot.

- Always place the soldering tool in the safety rest while not in use. Make sure the safety holder is stable.
- Do not touch the hot soldering tips and keep them away from inflammable objects.
- Only replace solder tips when cold

Risk of burning through liquid solder. Protect yourself against solder splashes.

- Wear appropriate protective clothing to protect yourself against burns. Protect your eyes by wearing eye protection.
- When working with adhesives, special attention must be paid to the warning information provided by the adhesive manufacturer.

Store your soldering tool in a safe place. When not in use, units and tools should be stored in a dry, high or locked area out of the reach of children. Make sure that unused soldering tools are free of voltage and de-pressurised. **Always place the soldering tool in the safety rest while not in use.** Prevent the soldering tip from becoming seized. A thin graphite layer applied to the thin end of the soldering tip, plus frequent withdrawal of the soldering tip, prevents unpleasant seizure. During soldering breaks, always ensure that the soldering tip is well tin-coated.

Always use the correct soldering tin. For normal electrical connections, use a solder with as low an acid content as possible together with a mild fluxing agent. Soldering tip range: Please visit www.apex-tools.eu.

Do not use the cable for purposes other than those for which it is intended. Never carry the unit by the cable. Do not use the cable to pull the plug out of the socket. Protect the cable against heat, oil and sharp edges.

Be alert. Pay attention to what you are doing. Be smart when using the unit. Do not use the soldering tool if you are having difficulty concentrating. **Avoid abnormal posture.** Arrange your work station in an ergonomically correct way. Avoid bad posture when using the unit, as this can lead to postural problems.

The soldering tool must be operated only in perfect technical working order. Safety devices must not be deactivated.

Faults and defects must be repaired immediately. Before using the unit / tool, safety devices must be carefully checked to make sure that they are functioning properly and in the manner intended. Check that moving parts are functioning properly and are not sticking, and whether parts are damaged. All parts must be correctly fitted and must satisfy all the requirements necessary to guarantee troublefree operation of the unit.

Use the correct tool. Use only accessories or auxiliary devices which are included in the list of accessories or approved for use by the manufacturer. Use WELLER accessories or auxiliary devices on original WELLER equipment only. The use of other tools and other accessories can cause injury.

Secure the workpiece. Use clamping fixtures to hold the workpiece. **Use a solder fume extraction unit.** If appliances for connecting solder fume extraction units are available, ensure that they are connected and used properly.

Specified Conditions Of Use

Use the soldering iron exclusively for the purpose indicated in the Operating Instructions of soldering and desoldering under the conditions specified here. The unit must not be exposed to temperatures above 50°C, naked flame or condensed solvents. Protect against moisture and direct sunlight.

Care and maintenance

Check all connected cables on a regular basis. If power tools are damaged, they must be immediately removed from use.



Use original replacement parts only.

Check all connected cables on a regular basis. If power tools are damaged, they must be immediately removed from use. **Repairs must always be referred to a Weller-trained specialist.**

WARNING Risk of burns

- Only replace solder tips when cold

The soldering tool must be left switched off in the safety rest for at least 3 minutes until the soldering tip has cooled down.

Warranty

Limited Warranty – Warranty Periods and Exceptions ATG warrants to each original Customer of Products sold by ATG that such Products are, at the time of delivery to the original Customer and for the applicable period of 7 years, free of material and workmanship defects for the applicable periods noted ("the Warranty Period")

Symbols



Caution!



Warning! Risk of burns



Read the operating instructions!

Technical Data

Soldering iron	WLIR30	WLIR60
High temperature Limit °C	400 °C	470 °C
High temperature Limit °F	750 °F	880 °F
Power consumption	30 W	60 W
Mains supply voltage	120 VAC / 60 Hz	
Tip type series	4 mm (5/16")	6 mm (1/4")
LED Lights	Yes	

Subject to technical alterations and amendments.

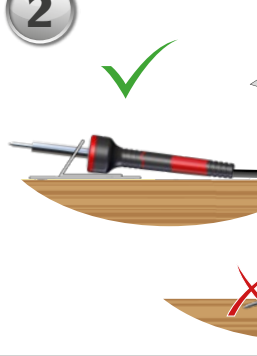
Soldering iron	WLIR80	WLIRPK80
High temperature Limit °C	470 °C	470 °C
High temperature Limit °F	880 °F	880 °F
Power consumption	80 W	80 W
Mains supply voltage	120 VAC / 60 Hz	
Tip type series	10 mm (3/8")	10 mm (3/8")
LED Lights	Yes	No

Subject to technical alterations and amendments.

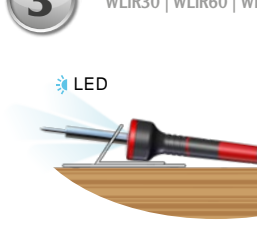
1 WLIR30 | WLIR60 | WLIR80



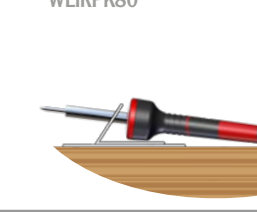
2 WLIR30 | WLIR60 | WLIR80



3 WLIR30 | WLIR60 | WLIR80



WLIRPK80



Test Equipment Depot



1-800-517-8431

5 Commonwealth Ave
Woburn, MA 01801
Phone 781-665-1400
Toll Free 1-800-517-8431