

Tools you need:

- ① Iron (30W)
- ② Solder wire
- ③ Multimeter
- ④ Tweezers
- ⑤ Wire cutters

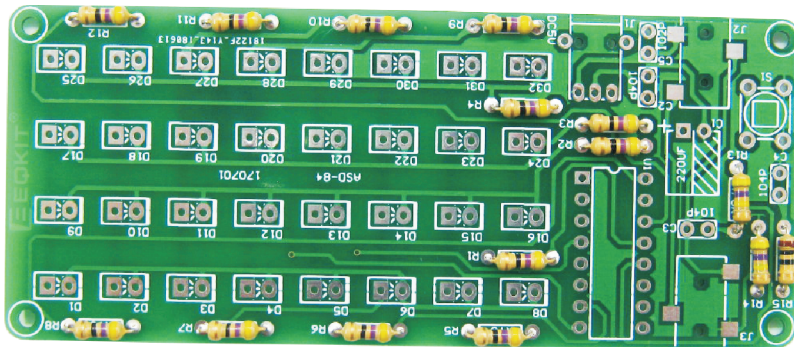
Precautions:

- ① Check part values & quantities against part list
- ② Always meter resistor values before soldering
- ③ Understand all part polarities and orientations

1. Install RES:

Refer to the resistance mark on the circuit board and install the resistor well.

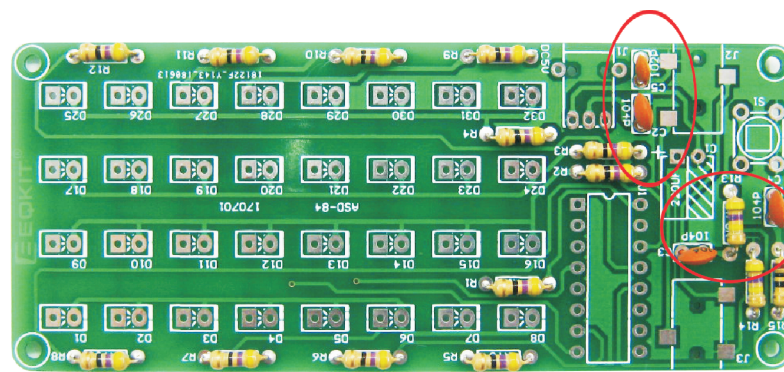
RX1~RX4,RY5~RY12=47Ω.



2. Install Ceramic capacitance:

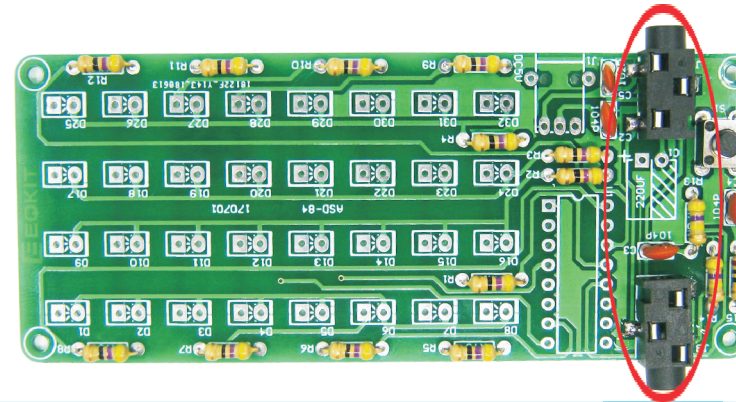
C5=102=1000pF

C2C3C4=104=0.1uF=100nF



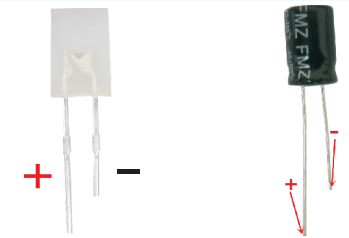
3. Install Audio input socket :

Two input sockets are convenient to connect to other devices again.

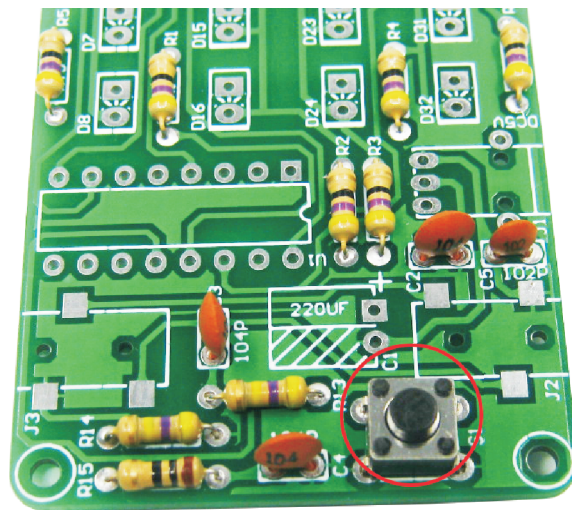


Warning:

Polar element: LED Electrolytic capacitor
The positive electrode shall be soldered to the square pad

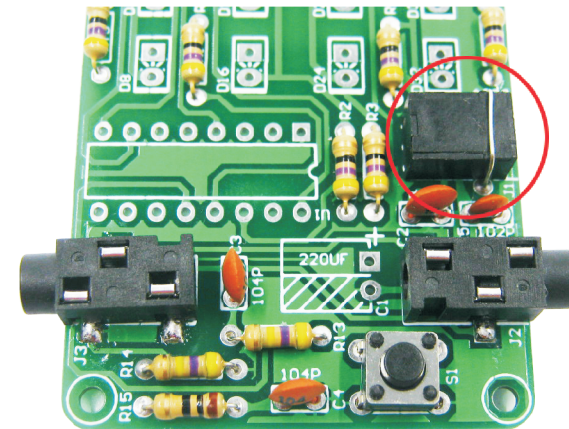


4. Install Function key S1 :



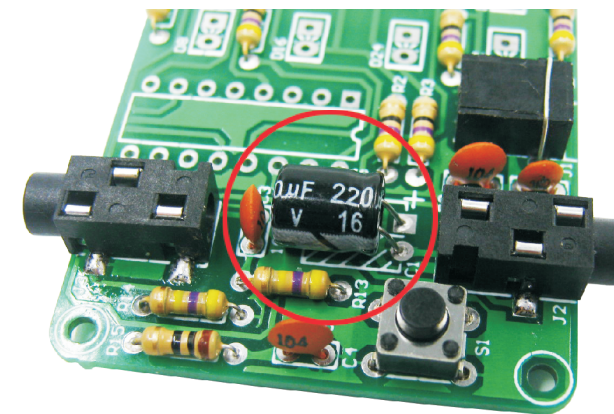
5. Install power input J1 :

The installed power input holder must be welded and fixed with a spare part pin.



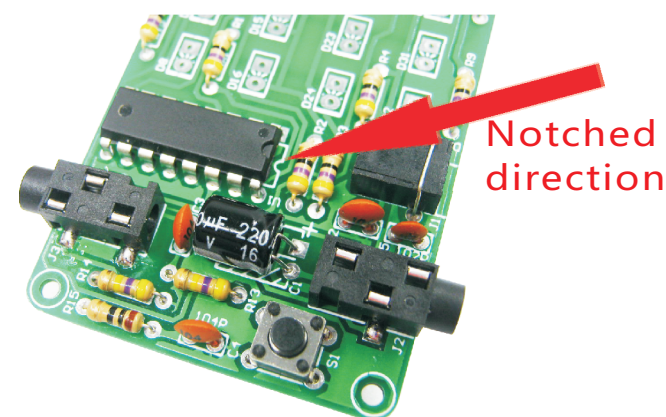
6. Install Electrolytic capacitor

The long pin of the electrolytic capacitor is the positive pole



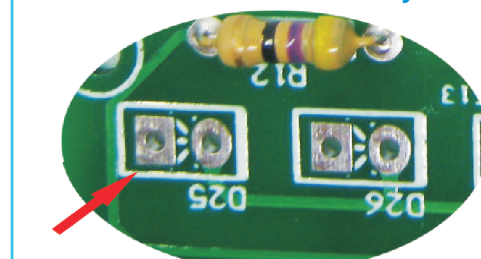
7. Install Integrated circuit :

Pay attention to the direction of installation



Notched direction

①



Square welding point is the positive pole

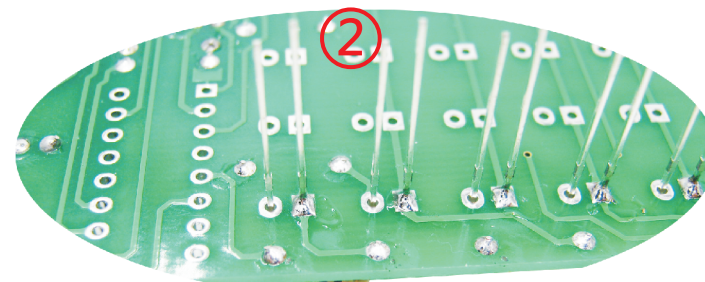
8. Install LED :

First, the positive and negative poles of LED are identified ①

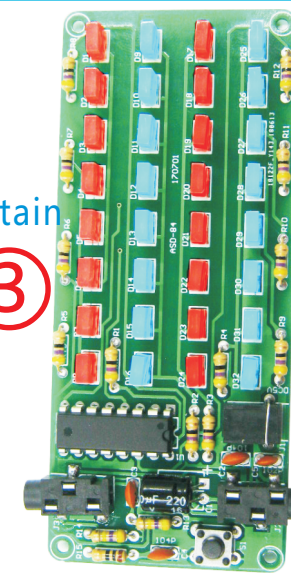
Install a row of LED first,

Install another row after welding and adjusting ②

Please pay attention to the installation of the lamp to maintain every horizontal or vertical color should be the same.



③



ASD-84 Audio spectrum component list

NO.	Name	Parameter	QTY
R15	RES	10R	1
RX1~4\RY5~12	RES	47R	12
R13, R14	RES	470K	2
C5	CAP	102	1
C2, C3, C4	CAP	104	3
C1	E-CAP	220uF	1
D1-D16	LED	2*5*7 Red	16
D17-D32	LED	2*5*7 Blue	16
J2, J3	Audio input socket	SMD8P	2
J1	Power input socket	DC3.5	1
U1	IC	WD1084	1
S1	Contact switch	6*6*5	1
-	PCB	ASD-84	1
-	USB to DC Line	100cm	1
-	Audio input Line	100cm	1

Display mode setting method

Mode	Setting method	Remarks
Factory testing mode	Hold down the S1 and turn on the power	Used to detect the normal luminescence of all LED
Fast scintillation mode (3)	Short press S1 is less than 1 second	The refresh frequency is very fast
Medium speed scintillation mode (2)	Short press S1 is less than 1 second	The speed of the refresh is general
Slow scintillation mode (1)	Short press S1 is less than 1 second	Slow refresh speed
High sensitivity mode (H)	Press and hold S1 for more than 2 seconds	Can detect weaker audio signals
Medium sensitivity mode (B)	Press and hold S1 for more than 2 seconds	Applicable to ordinary audio signals
Low sensitivity mode (L)	Press and hold S1 for more than 2 seconds	The ability to filter more interference signals

