



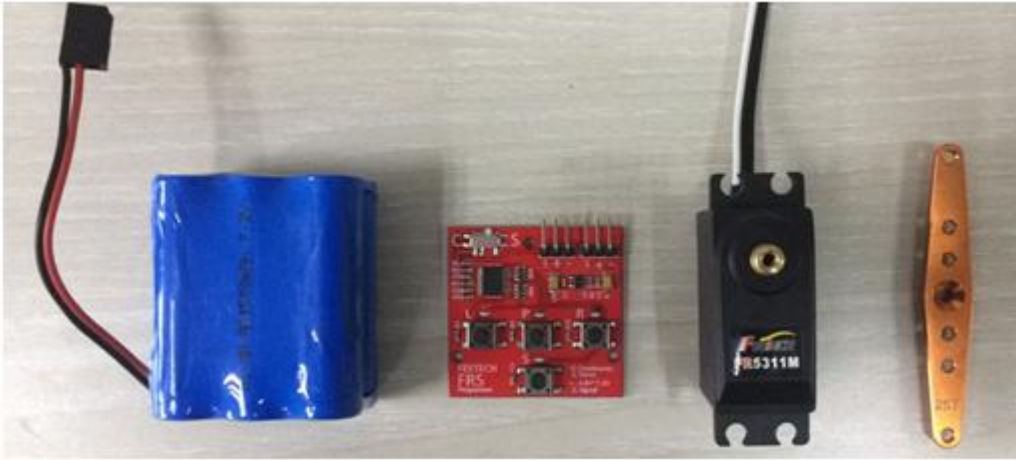
FR5311M dual-mode Servo

Quick instructions

修订历史

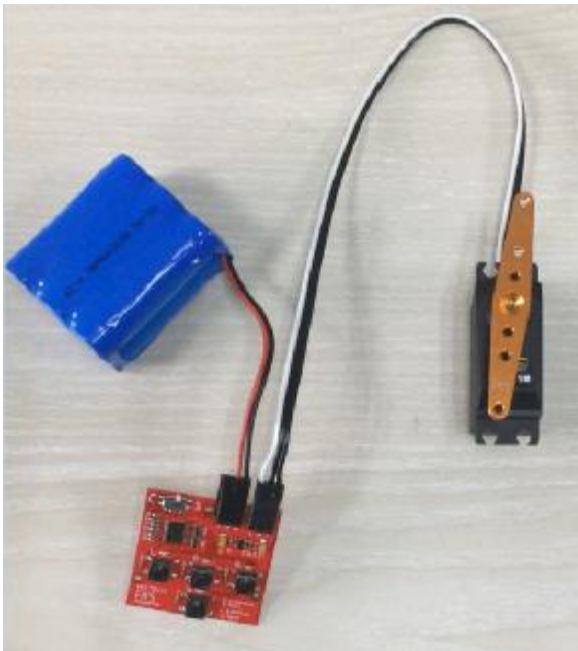
日期 Date	版本 Versions	更新内容 Updates
2017.01.11	V1.00	初次制定

Advance preparation



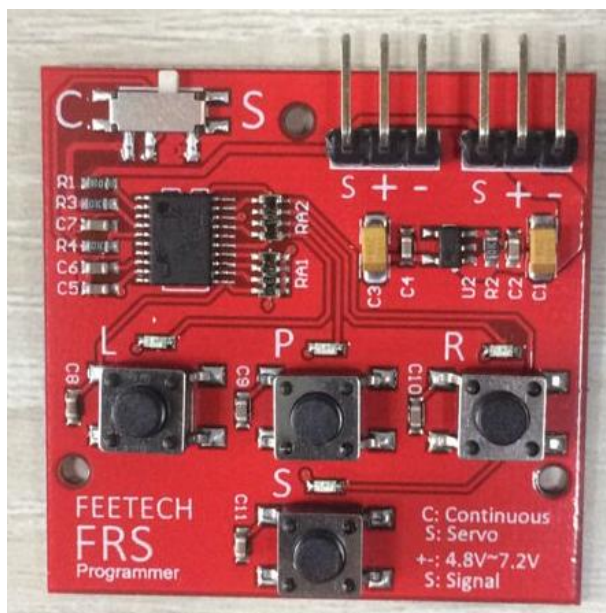
DC power supply DC4.8-7.2V
FEETECH FRS programmer (red PCBA)
FR5311M
25T Servo horn

Connection



- : DC negative
+ : DC positive
S: Servo Signal

Set Servo Mode



All LED at off status

- a: Selected switch to "S" side
- b: Long press the "P" key (> 5 second)
- c: all LEDs will flash when program completed
- d: Servo have set to work at Servo Mode

Test Servo

- a: Press "S" key (one time)
- b: Into auto sweep test mode, and "S" LED will quick flash
- c: Press "S" key (two time)
- d: Into 3 point test mode, and "S" LED will slow flash
- e: Press "L" key Servo will go to the LEFT side position
- f: Press "P" key Servo will go to the MIDDLE position
- g: Press "R" key Servo will go to the RIGHT side position
- h: Press "S" key (three time)
- i: Back to program mode, and all LED will off

Set Continuous Rotation Mode

All LED at off status

- a: Selected switch to "C" side
- b: Long press the "P" key (> 5 second)
- c: all LEDs will flash when program completed
- d: Servo have set to work at Continuous Rotation Mode
- e: Test servo can stop at MIDDLE position, CCW at LEFT position and CW at RIGHT position