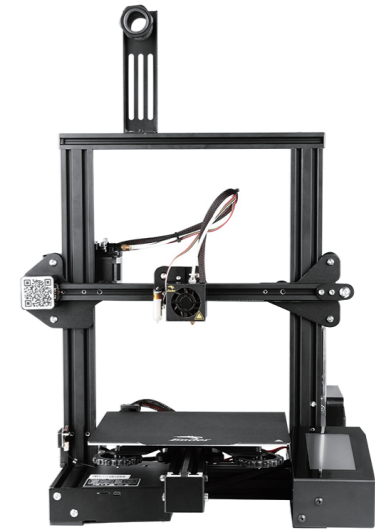


Installation Manual for Touch Screen

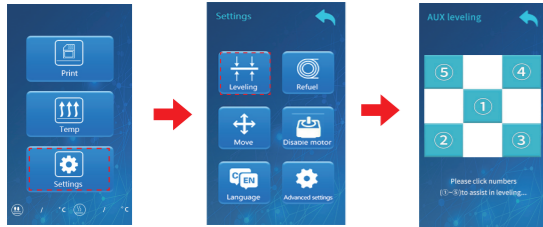


This manual is only suitable for Ender-3 and Ender-3Pro printers. It is compatible with Creality V4.2.2 motherboard or Creality V4.2.7 motherboard. Please select the correct motherboard model for installation of this touch screen kit.

1. Bed Leveling

1.1.Auxiliary leveling

- Select [Settings] on the main menu
- Select [Leveling] and tune leveling nuts by order



1.2.BL-Touch Leveling

- Perform 1.1 auxiliary leveling first before performing the following functions



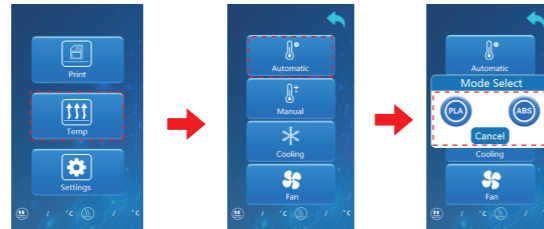
Use [Z+/Z-] to compensate Z value

Grid Leveling

Select [On] to auto-level bed for every new print job.

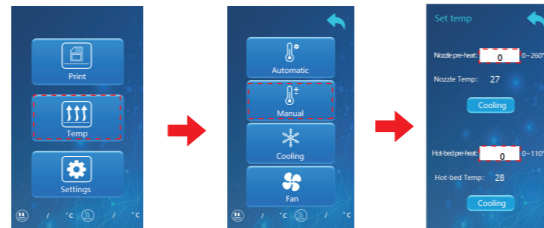
2. Auto-Preheat

- Preheat PLA/ABS



- ▶ Note: the target temperature of preheating is the default setting.
- ▶ PLA target temp: nozzle: 195°, hotbed: 50°
- ▶ ABS target temp: nozzle: 240°, hotbed: 70°

- Manual-Preheat



Cooling

- 1.Select [Temp] on the main menu
- 2.Select [Cooling] to cool down the nozzle and hotbed



Fan

- 1.Select [Temp] on the main menu
- 2.Select [Fan] to turn on/off the blowing fan

3. Print

- Select a Gcode file to print
- Wait for the nozzle and hotbed to heat up.
- Adjust settings accordingly.



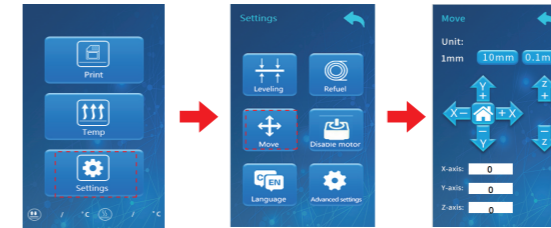
4. Change Filament

- Select [Settings] and [Refuel] to feed in/out filament.

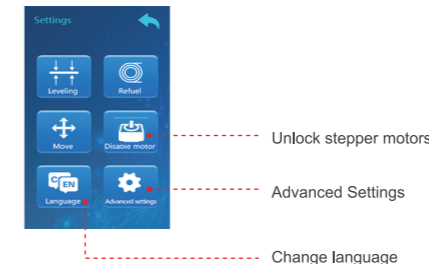


5. Move Axis

- Select [Settings] and [Move] to move axis(motors).



6. Other Functions



Unlock stepper motors

Advanced Settings

Change language

Parts Information

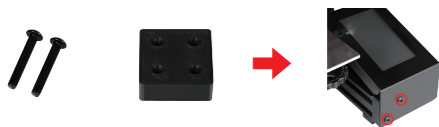
List :



Installation of the Touch Screen

Installation Steps

1. Install the touch screen



Step 1

Connect the cushion block to the touch screen tightly through two M3*30 screws, and fix it to the profile on the right front of the printer.

2. The interface connecting touch screen cable



Step 2

Connect the white end of the touch screen cable to the socket on the back of the touch screen.

3. The interface connecting printer motherboard cable



Step 3

Connect the black end of the touch screen cable to the motherboard socket.

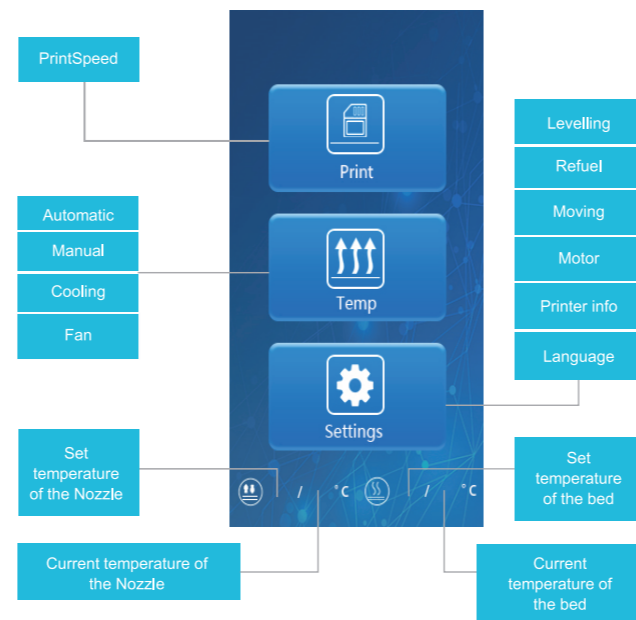
4. Press the power button after confirmation



Step 4

Check whether the wiring is loose; if not, install and fix the cover of the printer motherboard to complete installation of the touch screen.

Screen Display Information



Screen Information						
Main Menu	Sub Menu	Explanation				
Print	Selected file	Adjust	Stop			
			Pause/Continue			
			Print speed			
			Nozzle temp			
			Hot-bed temp			
			Z offset			
Temp	Auto matic	PLA/ABS(195°\240°)				
	Manual	Nozzle preheat				
		Hot-bed preheat				
	Cooling	Cool down?Yes\No				
	Fan	Turn on\Shut down				
Setting	Levelling	Z-axis:Z home,+0.1mm,-0.1mm				
		Aux leveling	Please click numbers to assist leveling (①~⑤)			
		AUTO leveling	Auto leveling , please wait...			
	Refuel	Withdraw				
		Feed				
Moving	X-axis	Y-axis	Z-home	Z-axis		
Motor off	yes\no					
Language	English\Chinese					
Settings	Levelling	Refuel	Move	Disable motor	Language	Printer info



SHENZHEN CREALITY 3D TECHNOLOGY CO.,LTD.

11 piano, stanza 1201, Blocco 3, JinChengYuan, TongSheng Community,
DaLang, Distretto Longhua, Shenzhen, Cina, 518109
Sito Web Ufficiale: www.cxsw3d.com
Servizio Clienti: 400 6133 882
0755-8523 4565