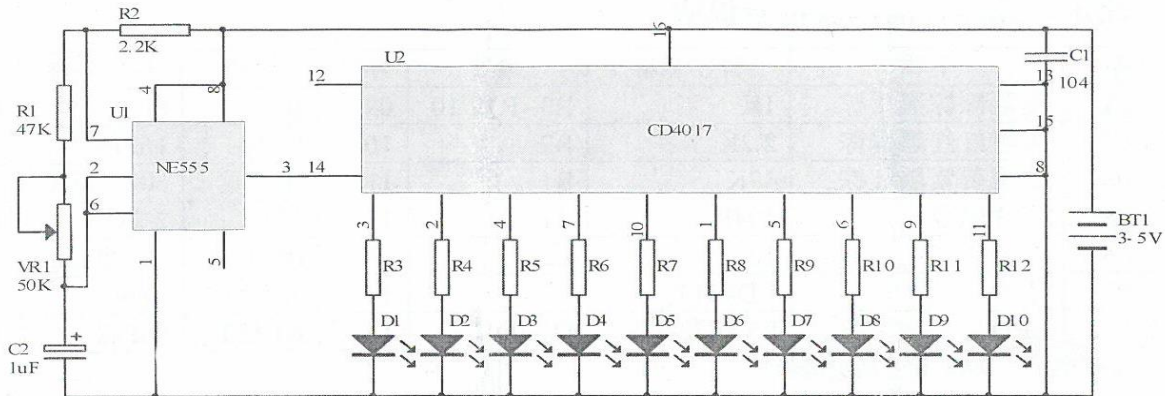


Component	Quantity	Remarks	PCB Reference Number
1k Ω Resistor	10	Brown, Brown, Black, Black, Brown	R3 - R12
2.2k Ω Resistor	1	Red, Red, Black, Brown, Brown	R2
47k Ω Resistor	1	Yellow, Purple, Black, Red, Brown	R1
CD4017	1	Insert according to Dent	U2
NE555	1	Insert according to Dent	U1
1uF Capacitor	1	Radial based capacitor, attention to polarity	C2
.1uF Capacitor	1	Ceramic Capacitor	C1
5mm LED	10	Cut side must line up with the side of the PCB	D1 – D10
50k Ω Resistor	1	Blue potentiometer to adjust speed	UR1
PCB Board	1	Follow Markings on Board for assembly	N/A
IC Socket Adapters	2	Optional, Dip must follow PCB Outline	U1 & U2
2 Pin Jumper	1	Optional supply only 3.3v to 5v	J1



Component	Quantity	Remarks	PCB Reference Number
1k Ω Resistor	10	Brown, Brown, Black, Black, Brown	R3 - R12
2.2k Ω Resistor	1	Red, Red, Black, Brown, Brown	R2
47k Ω Resistor	1	Yellow, Purple, Black, Red, Brown	R1
CD4017	1	Insert according to Dent	U2
NE555	1	Insert according to Dent	U1
1uF Capacitor	1	Radial based capacitor, attention to polarity	C2
.1uF Capacitor	1	Ceramic Capacitor	C1
5mm LED	10	Cut side must line up with the side of the PCB	D1 – D10
50k Ω Resistor	1	Blue potentiometer to adjust speed	UR1
PCB Board	1	Follow Markings on Board for assembly	N/A
IC Socket Adapters	2	Optional, Dip must follow PCB Outline	U1 & U2
2 Pin Jumper	1	Optional supply only 3.3v to 5v	J1